

Giulia Malaguarnera (OpenAIRE)

André Vieira, Pedro Principe (University of Minho)

OpenAIRE PROVIDE dashboard

a service to enable trust and value
within the EOSC repositories

The OpenAIRE Content Provider Dashboard

- **One-stop-shop web service**

for

- **Content providers** (institutional & thematic repositories, data archives, journal, aggregators, CRIS systems)

who

- interact with OpenAIRE (share and exchange metadata and content)
- **Front-end access** to many of OpenAIRE's **backend services**
- The content **gateway to EOSC**

PROVIDE dashboard: Added value functionalities



Validate

The **Validator** service assess the metadata quality by measuring your data source compatibility with the the **OpenAIRE guidelines** to expose your content by using global standards: <https://guidelines.openaire.eu/en/latest/>

Register

If validation succeeds your data source can be **registered for regular aggregation** and indexing in OpenAIRE. Additionally, you become part of the EOSC ecosystem and a global interlinked network. Reach a wider audience around the world.

Collection monitor

Collection monitor provides the **aggregation history**. Track the aggregation stage, collection mode and the number of records aggregated thus improving your metadata quality.

Enrich

Improve your metadata. Get more connections. **OA Broker service** offers a wealth of information on scholarly communication data. Find out what interests you and subscribe to enrich your records.

Measure

Share usage data via OpenAIRE's global **Metrics Service – UsageCounts**. Get the benefit of an aggregated environment.

Notifications

Once registered in OpenAIRE, content providers can use the Provide functionalities and to **get notifications & alerts** (enrichments, errors, useful info).



Benefits

- Extending repository **metadata models to Open Science practices**
- **Keeping the collections up-to-date:** alerts, enrichments, additions
- Fostering notification-based and federated dissemination of knowledge

Added Value, improve:

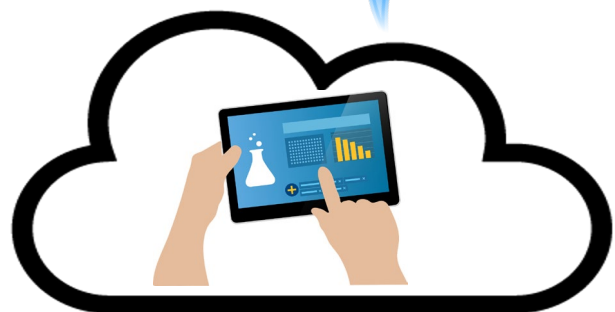
- **Repository interoperability**, collections and content for **enhanced visibility and access**
- Institution memory & research assessment
- **Enable the onboarding in EOSC**

Role to the EOSC

- **Interoperability compliance** via the OpenAIRE Guidelines.
Every data source validated in OpenAIRE is EOSC compliant
 - Guidelines: v3.0, v4.0, data, CRIS
- **Integration** of the data sources registration workflow within the **EOSC Research Product Catalogue**
- **OpenAIRE Graph** becomes a **key asset for discovery and monitoring within the EOSC**: <https://graph.openaire.eu/>

OpenAIRE provide – the content gateway to EOSC

Share resources!



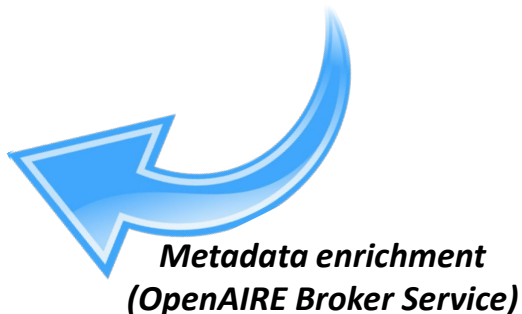
Libraries (e.g. Repositories, Archives, CRIS systems)



Search, find, identify, compose, and reuse resources!



EOSC users
RIs, clusters, e-infras, long tail, libraries, organizations, funders, companies



Metadata enrichment (OpenAIRE Broker Service)

Reporting scientific production to funders, Commission, and scholarly communication services



SciVal
ELSEVIER



Scopus

Compatibility with the OpenAIRE Guidelines

- **EOSC:** OpenAIRE is your entry/gateway to EOSC.
 - If you are compliant with the OpenAIRE guidelines then
 - You will be onboarding the EOSC Portal Catalogue and Marketplace integrated platform
- **Improved interoperability** to meet latest IT and repository standards
 - Your content is more:
 - Contextualised (links and relationships to other types of research outcomes and entities),
 - Flexible (using different and improved vocabularies)
 - Embedded in the R&I ecosystem (alignment with Open Science mandates and standards and support for well-established metadata schemas, namespace abbreviations)
- This is your road to **FAIR**“ness”
 - If you are compliant with the OpenAIRE guidelines then
 - you are also FAIR enough



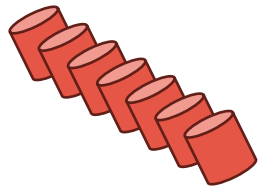
Open**AIRE**
Interoperability
Guidelines

EOSC and OpenAIRE provide and guidelines



OpenAIRE Guidelines

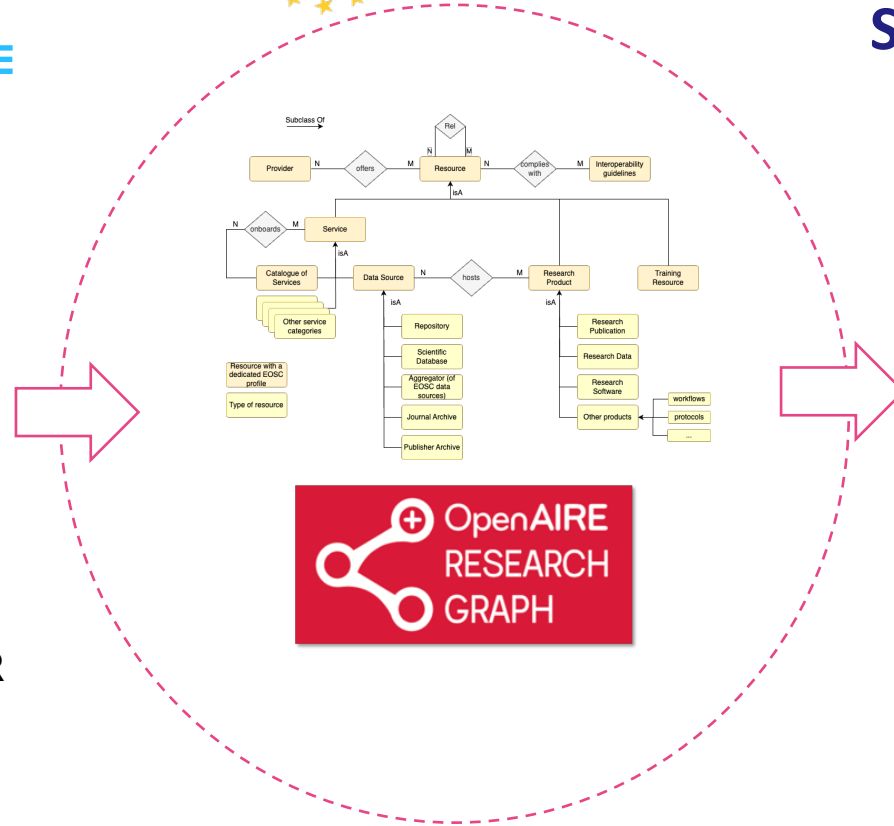
- Publication repos
- Data Archives
- CRIS systems



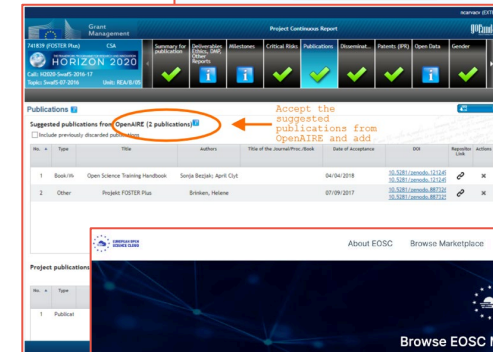
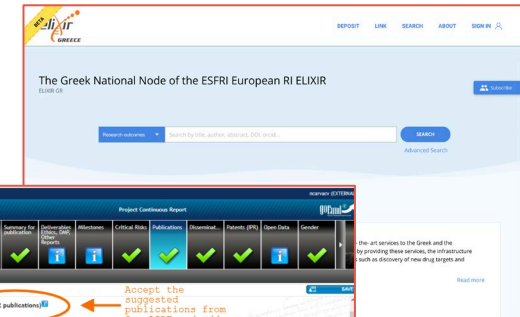
VALIDATE



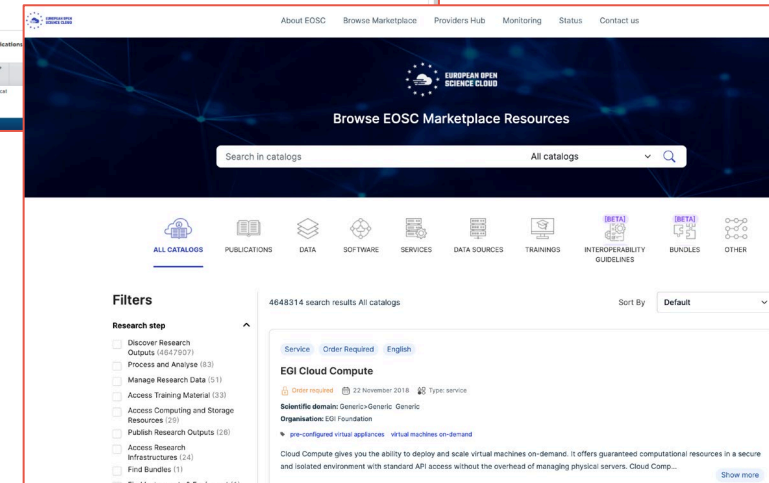
REGISTER



Scholarly Community services



Accept the suggested publications from OpenAIRE and add






An **open metadata** research graph of interlinked **scientific products**, with **access rights information**, linked to **funding information** and **research communities**



Building trust and value

- Repositories network
- **Community-driven service** with a strong focus on the end-user needs (user-centered design) based on feedback during the **monthly community calls**: www.openaire.eu/provide-community-calls




**OPENAIRE CONTENT PROVIDERS
COMMUNITY CALLS**

Upcoming releases, questions and comments,
recent developments

Are you a **content provider**? Got questions?
Come and **learn more!** OpenAIRE is running a
series of **regular online community calls** targeting
all OpenAIRE **content providers managers**.

EVERY MONTH
ON THE FIRST WEDNESDAY 14:30 CET



THANKS

Email

helpdesk@openaire.eu

Twitter

[@openaire_eu](https://twitter.com/openaire_eu)
