

From Playgrounds to Ground for Play:

A Comparison of the Playgrounds in Pevidém, Portugal with the Playgrounds in Heidelberg, Germany and elsewhere

Cidália F. Silva

Lab2PT

EAAD, University of Minho

SRH University, Heidelberg

cidalia@eaad.uminho.pt

Claudia Pando

Intern, DO Atelier, Portugal

claudiamfp@hotmail.com

12th Constructed Environment Conference

2022 SPECIAL FOCUS—CONSTRUCTING NEW ENVIRONMENTS FOR LIVING, WORK AND PLAY

University of Monterrey, Mexico, 28-29 April 2022 - a blended and online conference.

From Playgrounds to Ground for Play

This paper compares the playgrounds in Pevidém, a region in the municipality of Guimarães, Portugal, to those in Heidelberg, Karlsruhe, and Frankfurt, Germany. The comparison has the following purpose:

Why is it that the standardization observed in Pevidém is not seen in the selected examples in Heidelberg, Karlsruhe, and Frankfurt despite the fact that the playground equipment is regulated by the same European norms?

PLAYGROUNDS IN PEVIDÉM

Parque Infantil do Mercado de Pevidém



Parque Infantil da Urbanização da Lapa



Parque Infantil da Rua da Cova de Cima



Parque de Lazer do Rio Selho



Parque Infantil da Praça S. Francisco Inácio



Parque Infantil da Rua do Souto



Parque Infantil da Rua Alfredo



Parque Infantil da Urbanização da Emboladoura



Parque Infantil de Candoso S. Martinho



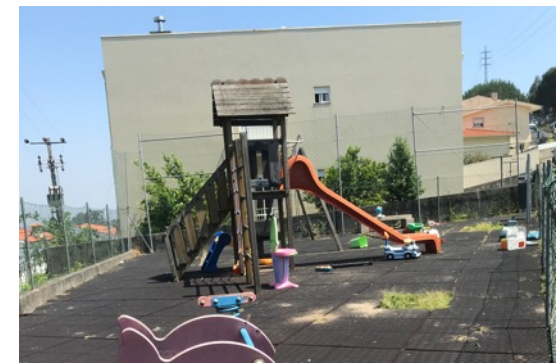
Parque Infantil da Rua do Grupo Desportivo



Parque de Lazer do Talegre



Parque Infantil da Rua da Saudade



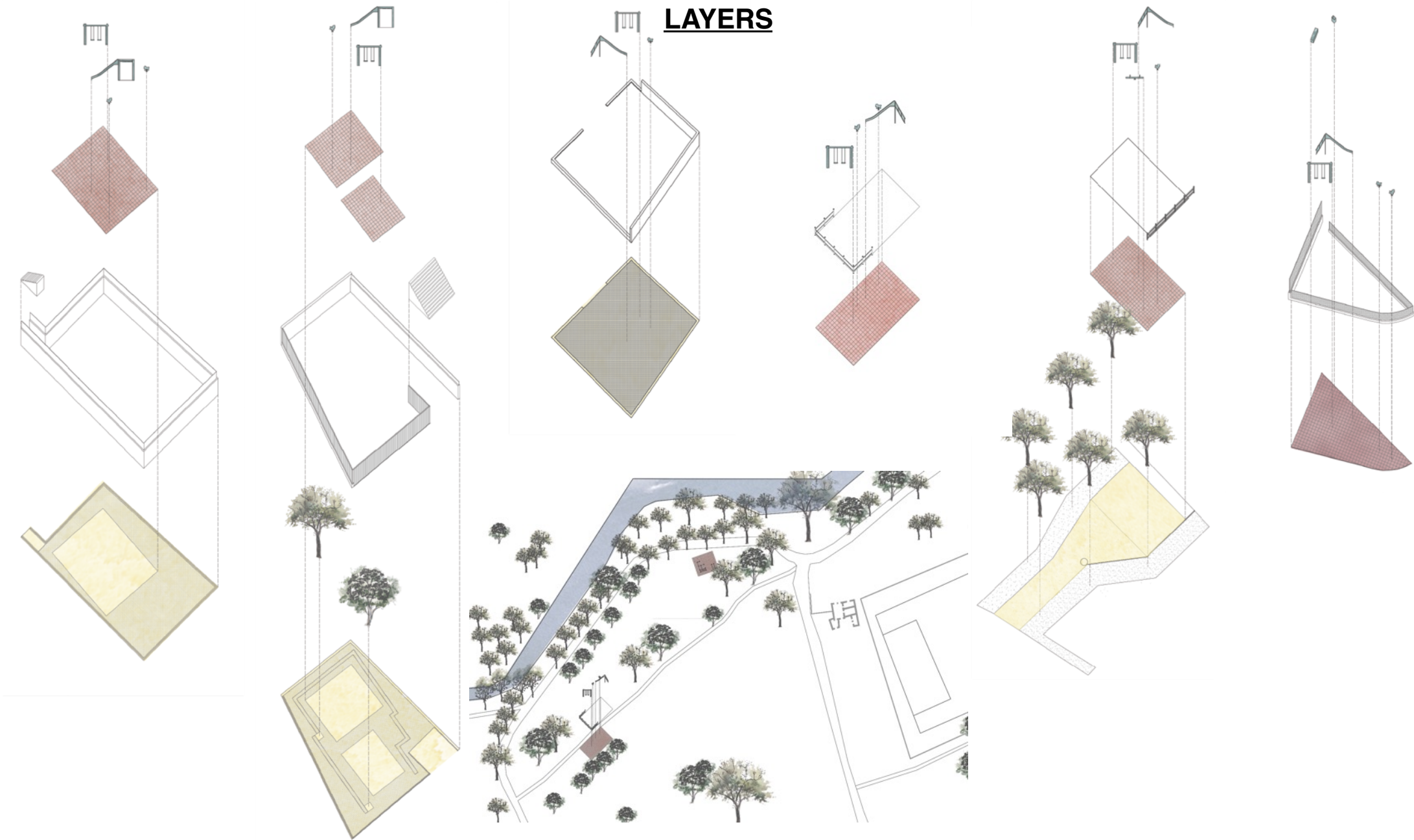
PLAYGROUNDS IN PEVIDÉM

EQUIPMENTS

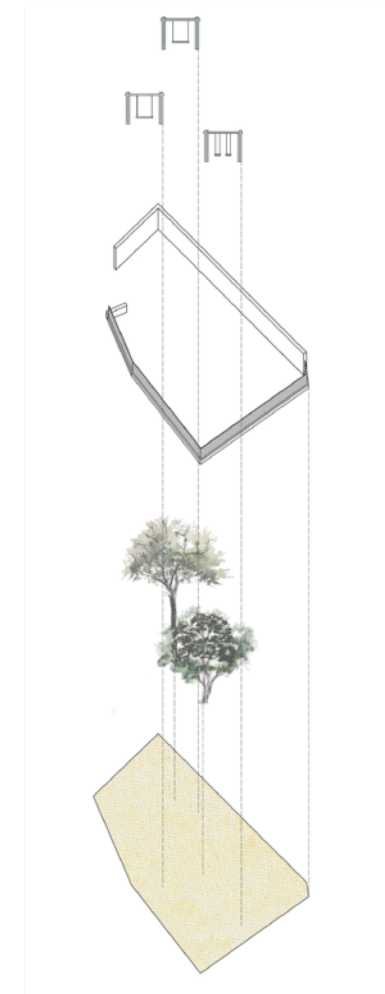
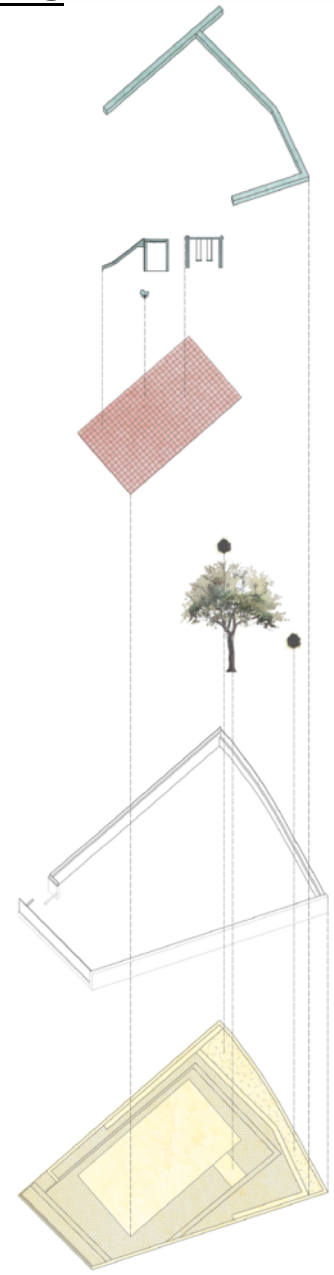
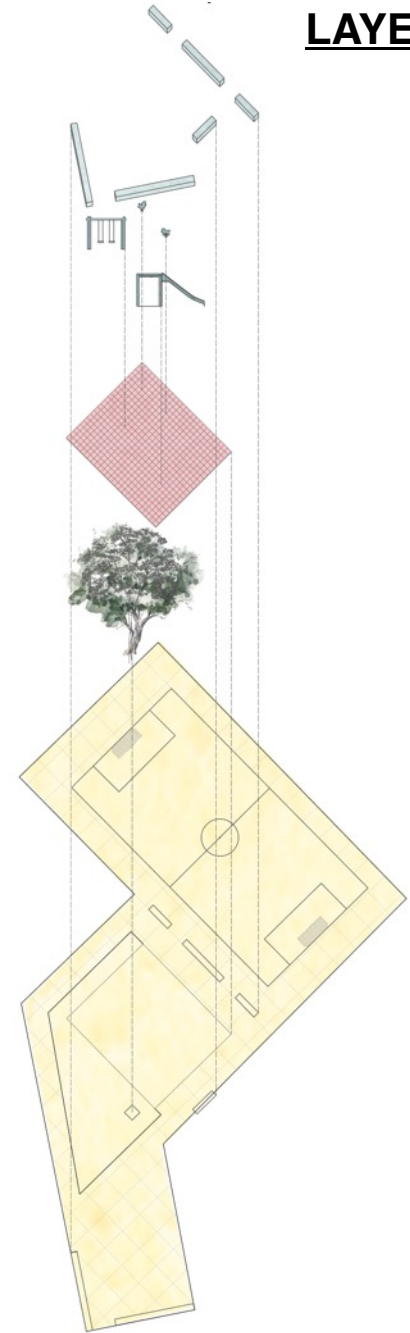
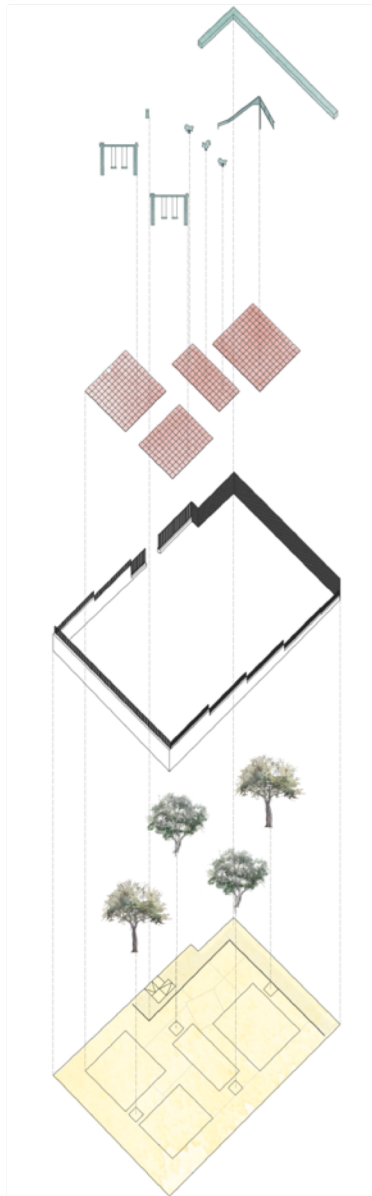
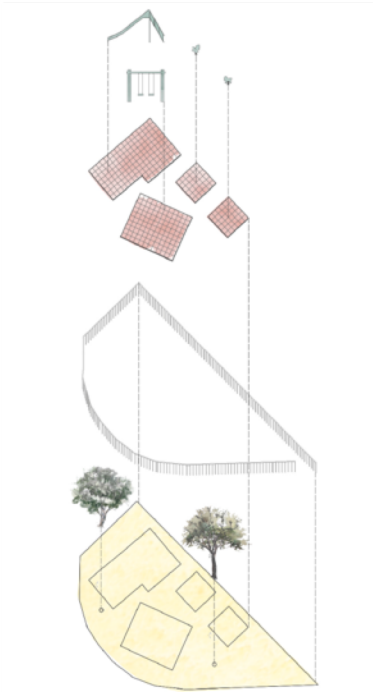


PLAYGROUNDS IN PEVIDÉM

LAYERS



PLAYGROUNDS IN PEVIDÉM LAYERS



PLAYGROUNDS IN PEVIDÉM

IMPACT SURFACE

2008/2010



2019

PLAYGROUNDS IN HEIDELBERG AND ELSEWHERE



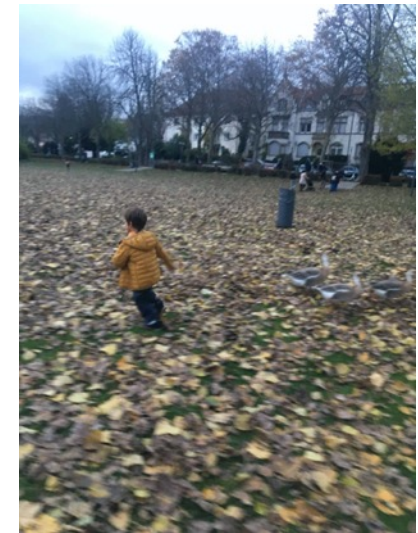
Anna Blum Spielplatz Theaterstraße, Heidelberg

PLAYGROUNDS IN HEIDELBERG AND ELSEWHERE



Anna Blum Spielplatz Theaterstraße, Heidelberg

PLAYGROUNDS IN HEIDELBERG AND ELSEWHERE



Time to play together, time to play alone

Spielplatz am Neckarwiese, Heidelberg

PLAYGROUNDS IN HEIDELBERG AND ELSEWHERE



Time to play together

Spielplatz am Neckarwiese, Heidelberg

PLAYGROUNDS IN HEIDELBERG AND ELSEWHERE

Playing with sand



Spielplatz am Neckarwiese, Heidelberg

PLAYGROUNDS IN HEIDELBERG AND ELSEWHERE



Playing with water

Spielplatz am Neckarwiese, Heidelberg

PLAYGROUNDS IN HEIDELBERG AND ELSEWHERE



The ground

Spielplatz am Neckarwiese, Heidelberg

PLAYGROUNDS IN HEIDELBERG AND ELSEWHERE



Spielplatz am Fasanengarten, Karlsruhe

PLAYGROUNDS IN HEIDELBERG AND ELSEWHERE



Time to play together



Spielplatz am Fasanengarten, Karlsruhe



PLAYGROUNDS IN HEIDELBERG AND ELSEWHERE



Time to play alone



Spielplatz am Fasanengarten, Karlsruhe

PLAYGROUNDS IN HEIDELBERG AND ELSEWHERE



Time to play together

Spielplatz Frankfurt Mainkai, Frankfurt



Playing with sand



Playing with sand

PLAYGROUNDS IN HEIDELBERG AND ELSEWHERE



Playing with topography

Spielplatz Frankfurt Mainkai, Frankfurt



CONCLUSIONS

- Pevidém's playgrounds are standardized, with the same equipment and materials repeated and a stereotypical design.
- Unlike in the examples of Heidelberg, Karlsruhe and Frankfurt, there is opportunity for variation; each park has its own unique qualities; the equipment, materials, and ground are various and distinct for each of them, and the design is site specific.
- In Pevidém, we wonder: where is the place for children's free play in these spaces? How are the children's many senses stimulated in these types of parks? What is the role of parents, other than being the children's safety guardians; why is it always forbidden for parents to play with their children? Why is there always a fence, a physical boundary, even when the children are not in risk?
- Case studies from Heidelberg, Karlsruhe and Frankfurt are included to demonstrate how "playgrounds" can become true "grounds for play," fostering children's free appropriation, creativity, and imagination, as well as intergenerational play in some circumstances. The ultimate goal is to contribute to the transformation of the myopia with which children's playgrounds in Portugal are designed and built.

Epilogue: When a park becomes a ground for play



materiality

freedom

flexibility

imagination

