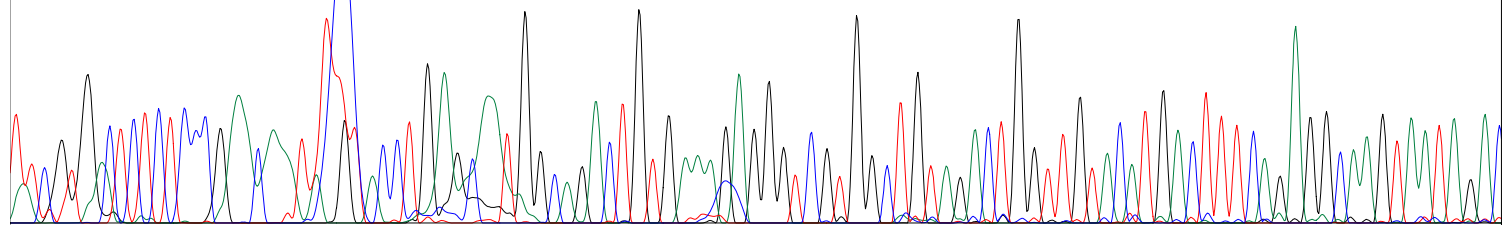
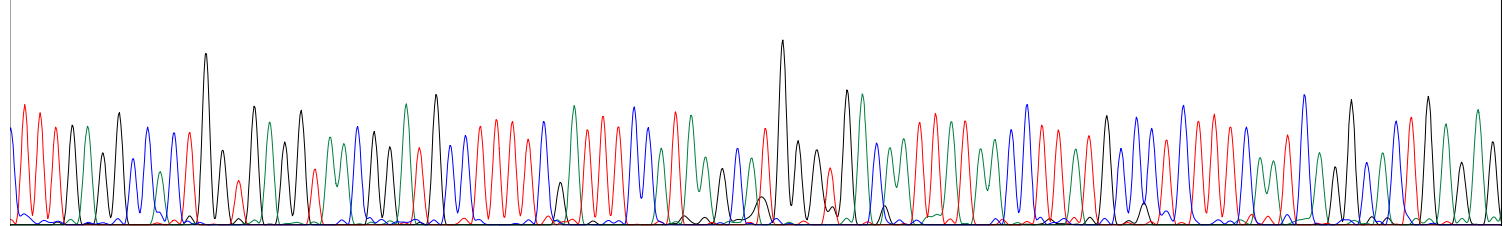


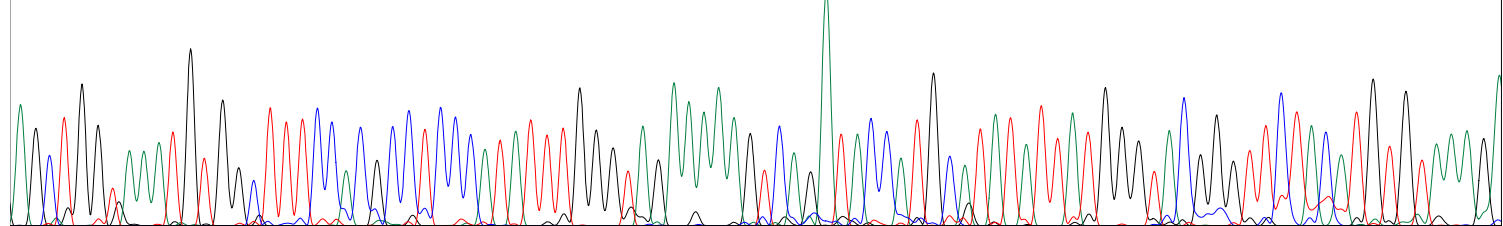
10 20 30 40 50 60 70 80 90 100  
TATC GT GACTCTCTCCCGAACCAATATgTACCTCGAGCAATGGCAGACTGTGAAAGAGGGTTCGTGGCTGTAGACTGGTTGTACATGACTTTTCAGAGGCCAAGTAATAAGC



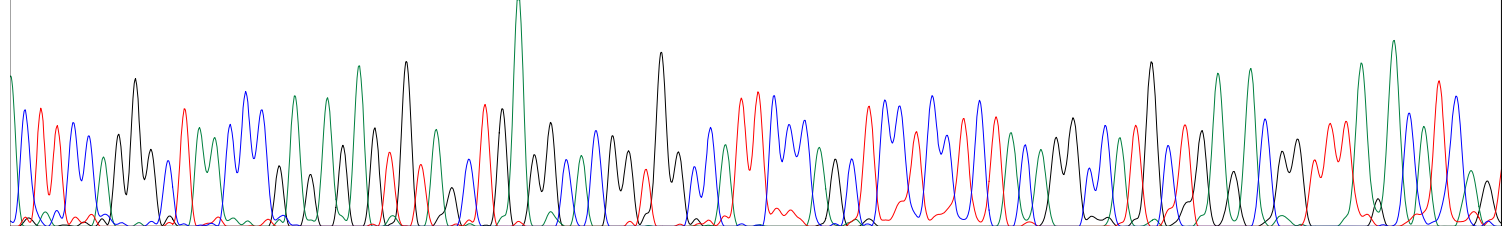
110 120 130 140 150 160 170 180 190 200  
TTT GAGGCCACTGGTGAGGTAAACGGATGCCTTTTCGATTTCCATAAGCATGGTGACAATTATAA CCTTATGCCCTCTTTCAATCAGGCACCTGAGAG



210 220 230 240 250 260 270 280 290 300  
AGCTGGTAAATGTGGCTTTCCACGCCCTCCCATATTTGGGTAGAAAAAGTCAGATACCATGCA TATATTTATGGGTACGGGTTCTACATGTTGTAAGA



310 320 330 340 350 360 370 380 390  
CTTCCAGGGCTAAACCGAGAGAGTGTAGCTGAGGCACGGTGGCCATTTCCAGCTCCTCCTCTACAGGCCATGCTGAGACGGTTTAGACATCAGT



400 410 420 430 440 450 460  
TTCTTAGAGCAACCCAGTTAAAGAGATGTGTCCCTATTACCCTGAAAAAGAGTAAAACAGGATCTCANCTCA

