



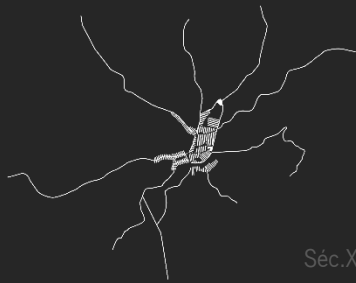
**Universidade do Minho**  
Escola de Arquitetura

JOÃO NUNO CARDOSO  
GUIMARÃES 2017

## **Transversal Urbana:** Um suporte para a descentralização da cidade de Guimarães







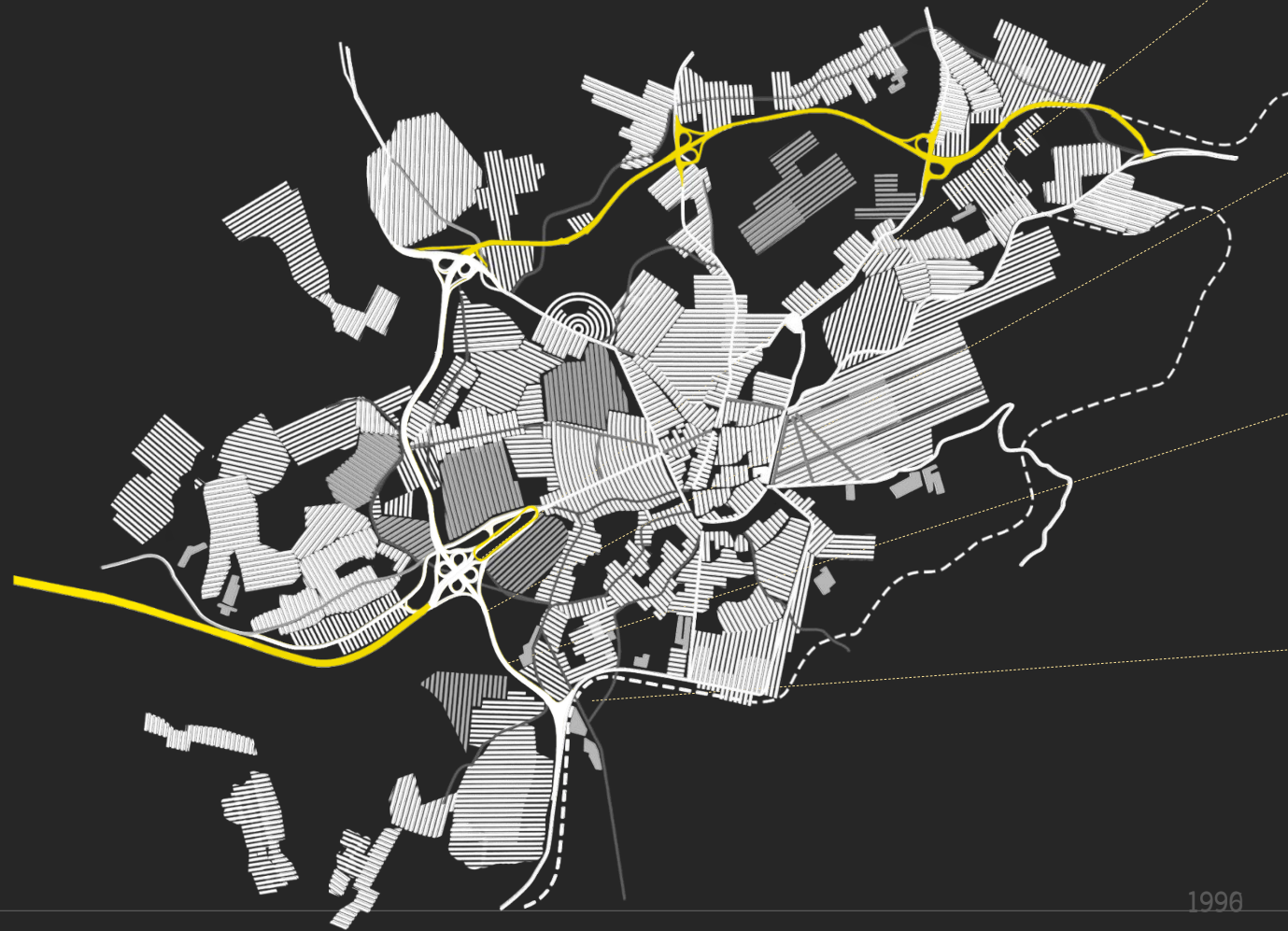
Séc. XV



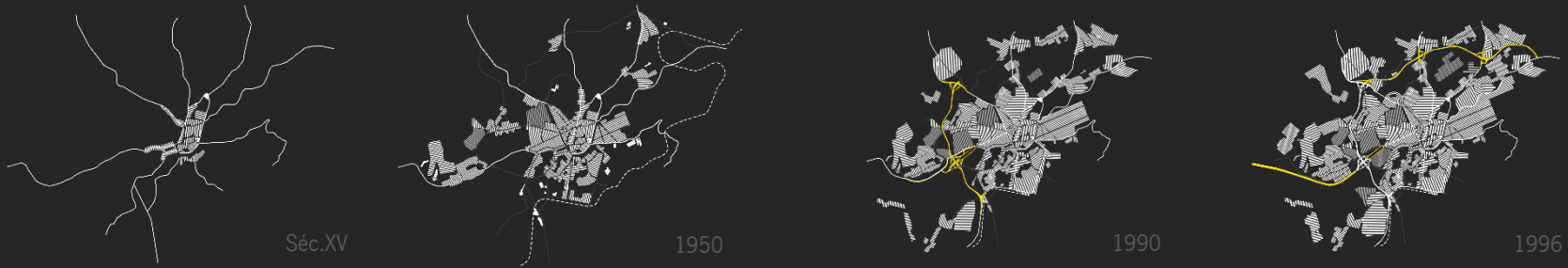
Séc. XV



A evolução da estrutura urbana de Guimarães



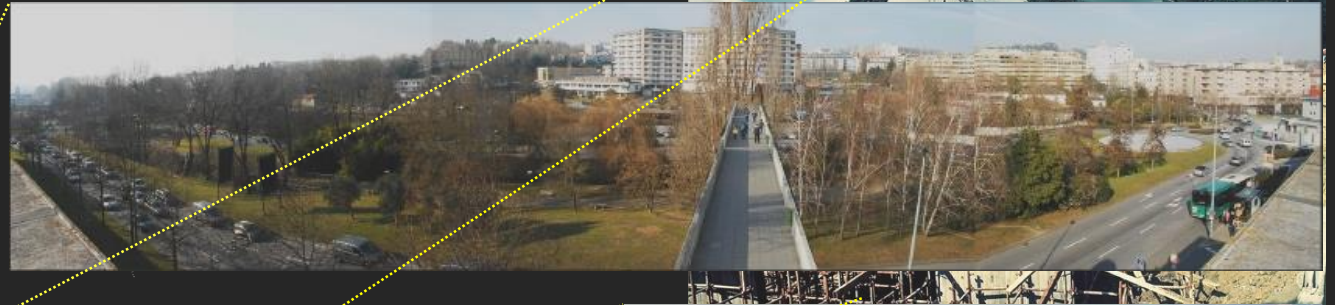
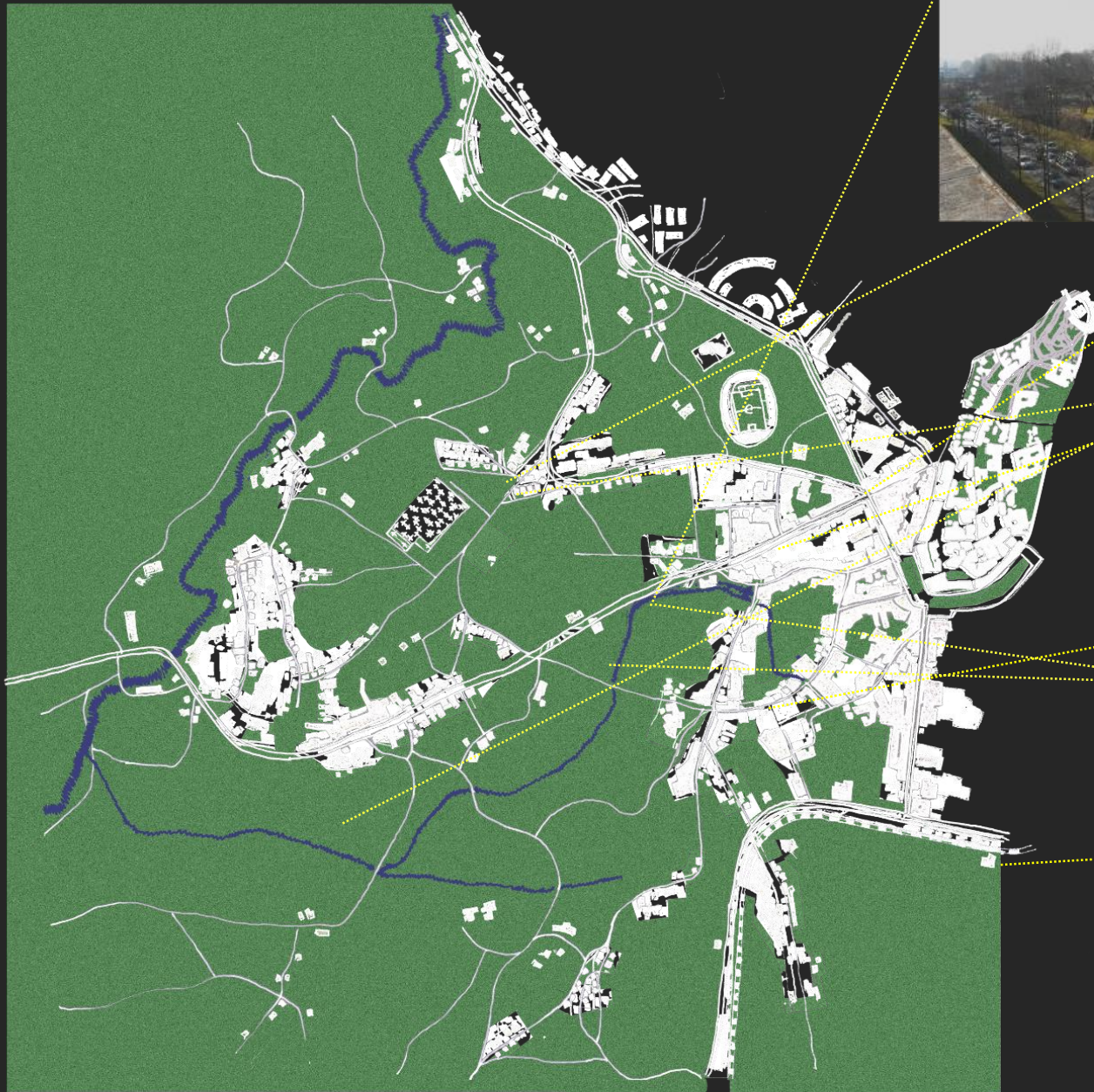
A evolução da estrutura urbana de Guimarães

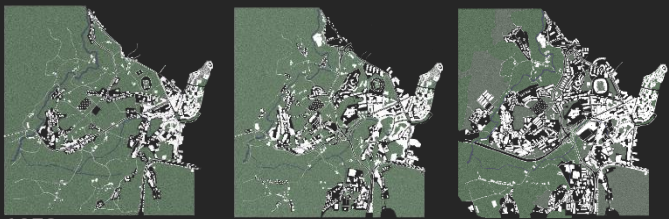


Situação actual  
**Caso de estudo.** A descentralização do núcleo urbano de Guimarães pela transposição da barreira



**Barreira Urbana.** A intervenção da circular urbana no território

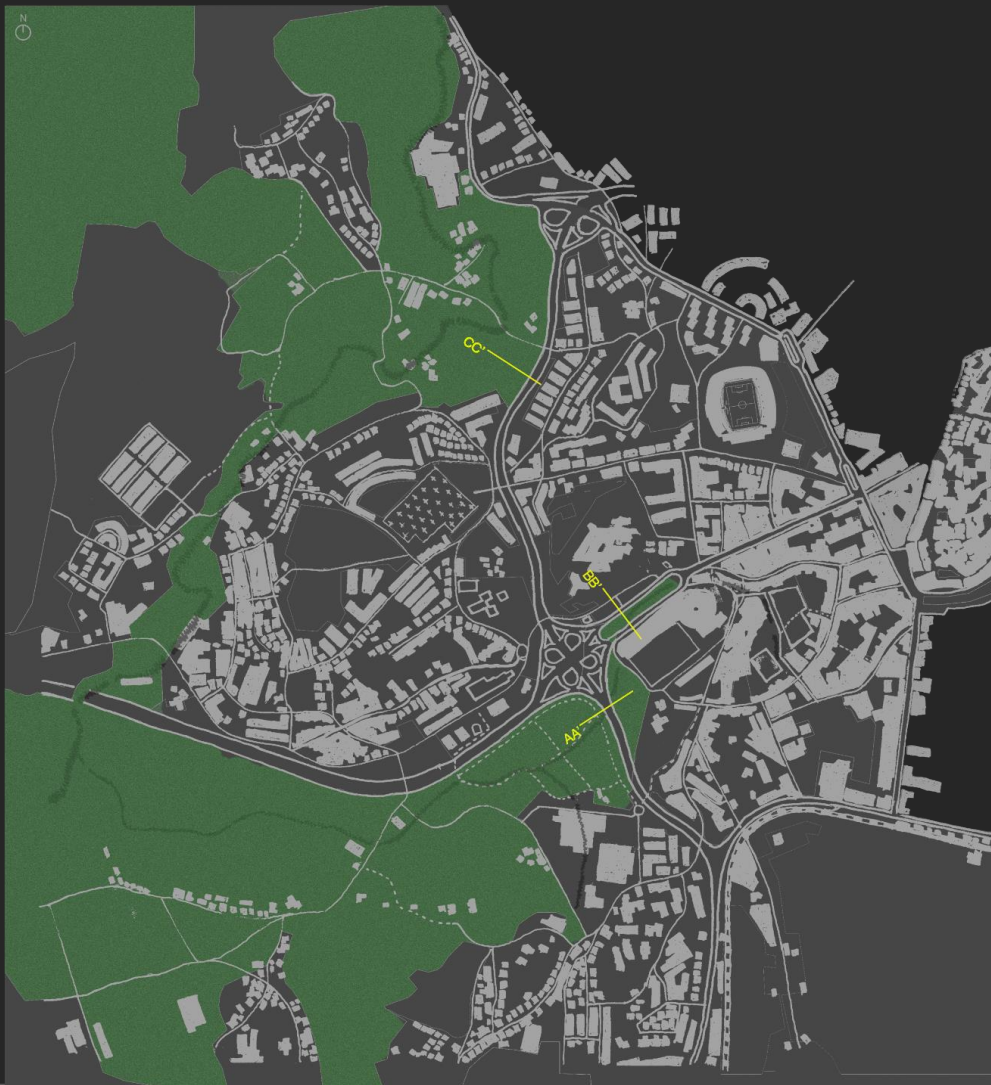




1978

1990

2017



cota 160

cota 158,5

cota 153

cota 180

CC'

BB'

AA'

circular urbana

eixo viário

eixo viário

circular urbana

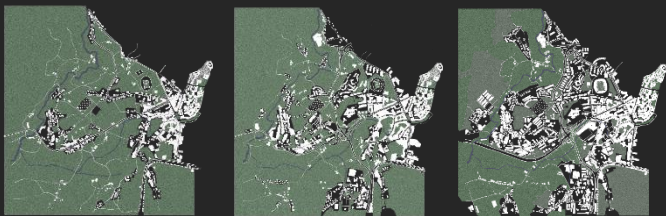
cota 162

cota 155

## 1 – Acção perimétrica

Barreira Urbana. A intervenção da circular urbana no território

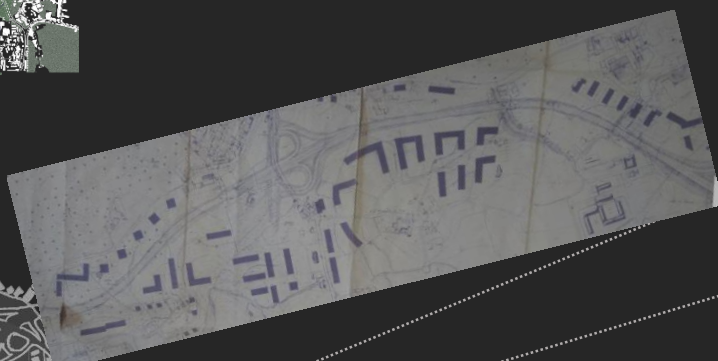
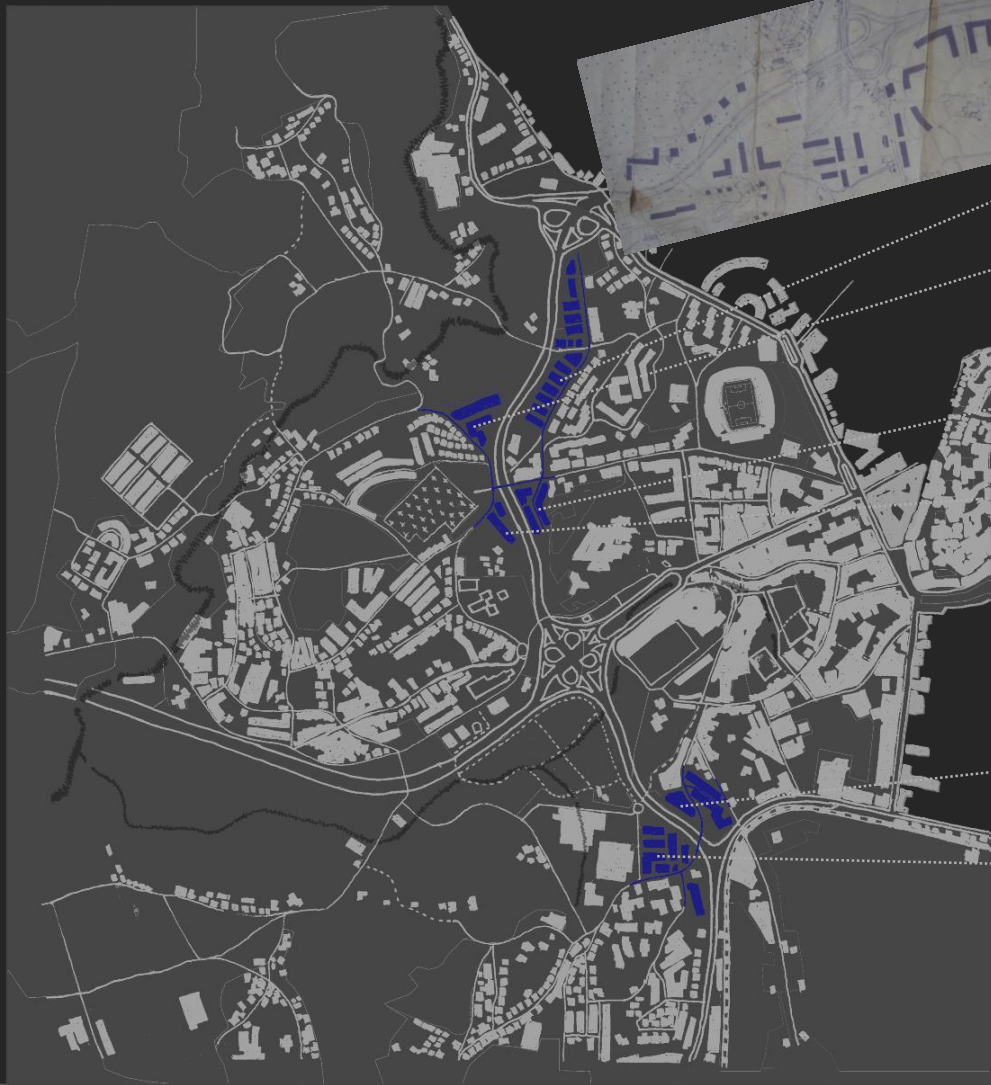


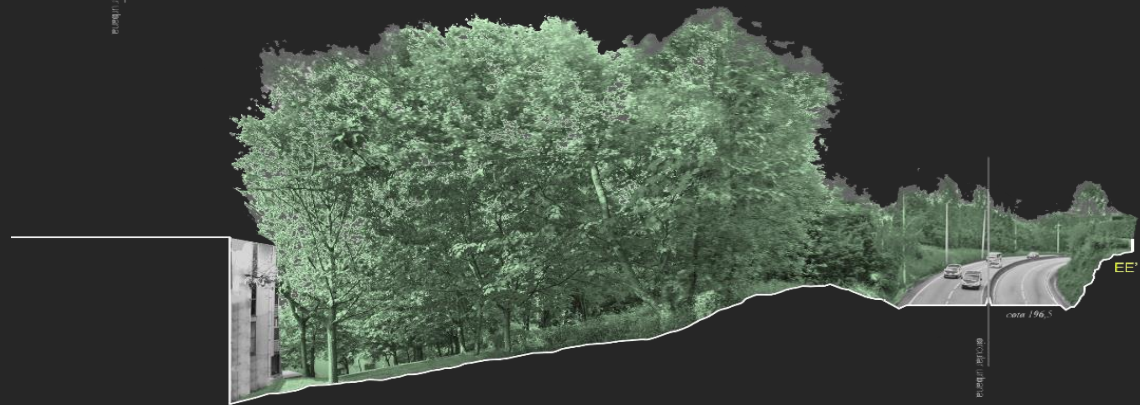
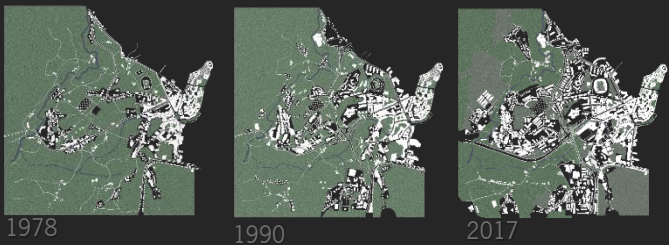


1978

1990

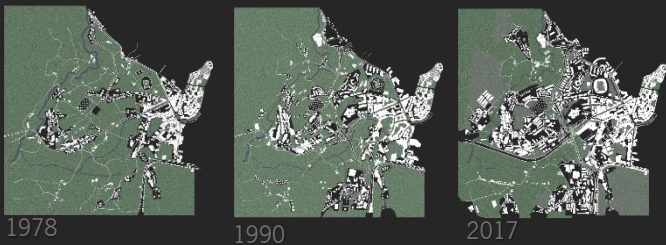
2017





**3 – Ação intersticial**

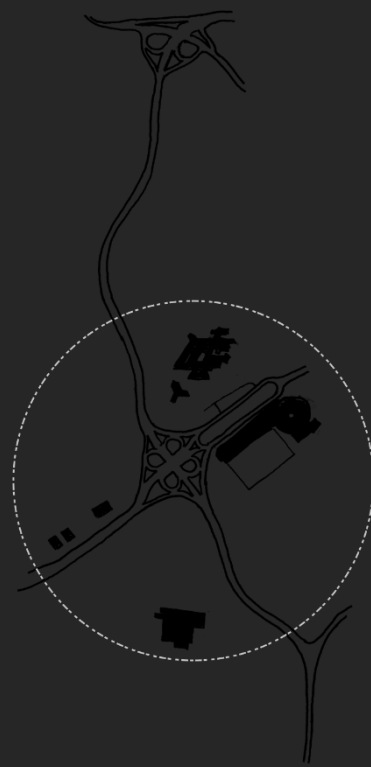
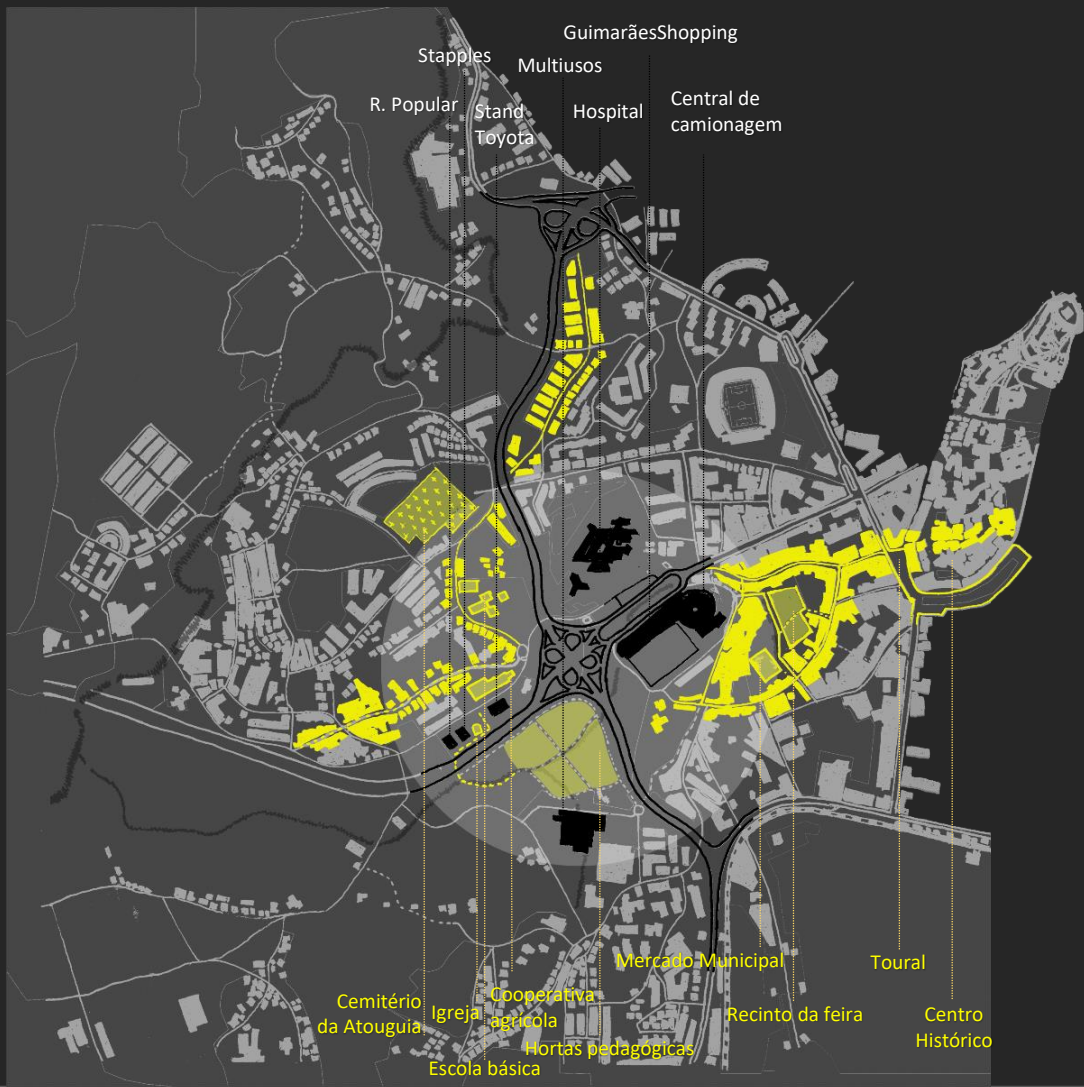
**Barreira Urbana.** A intervenção da circular urbana no território



1978

1990

2017

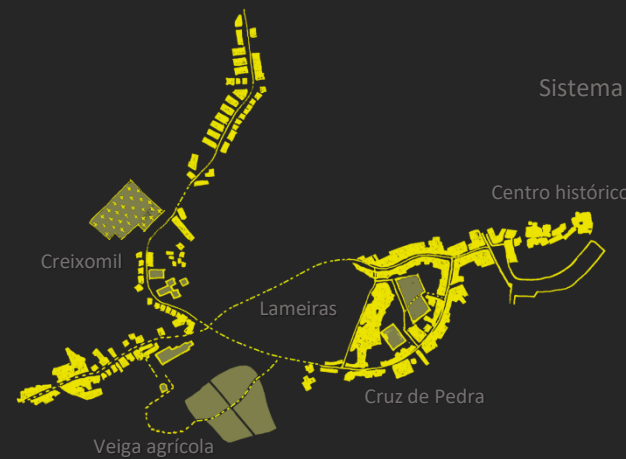


Área de influência da intersecção viária

Sistema de influência regional

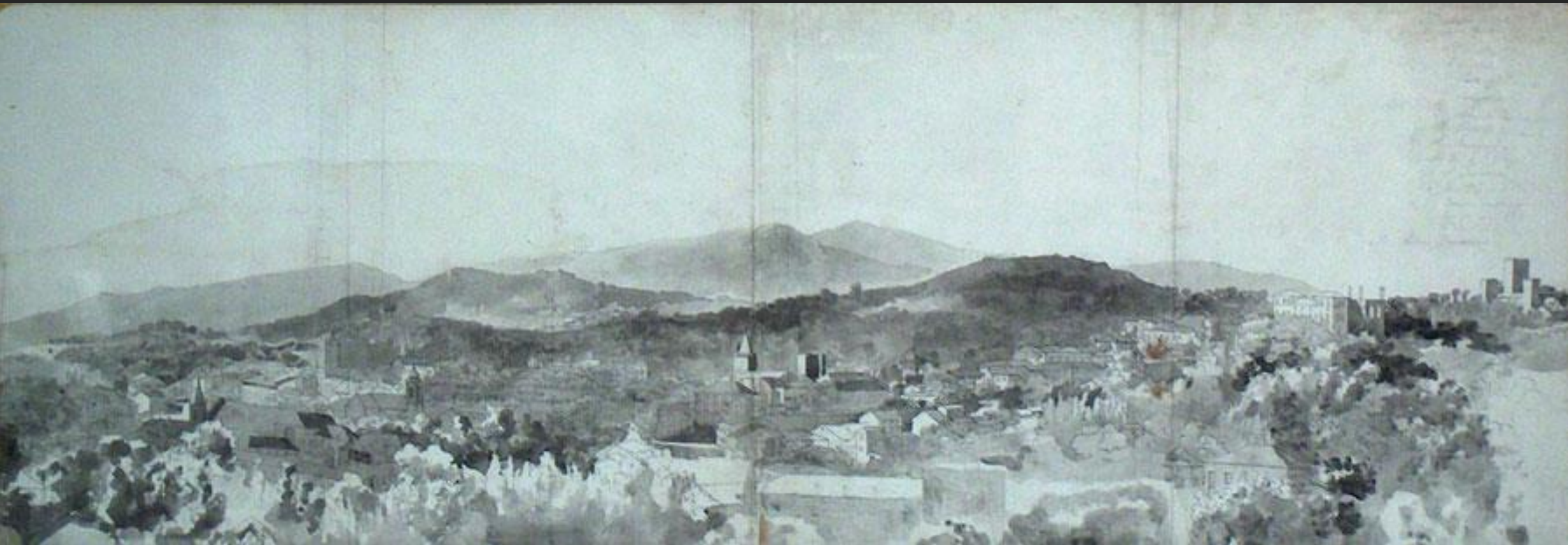


Sistema de relações locais



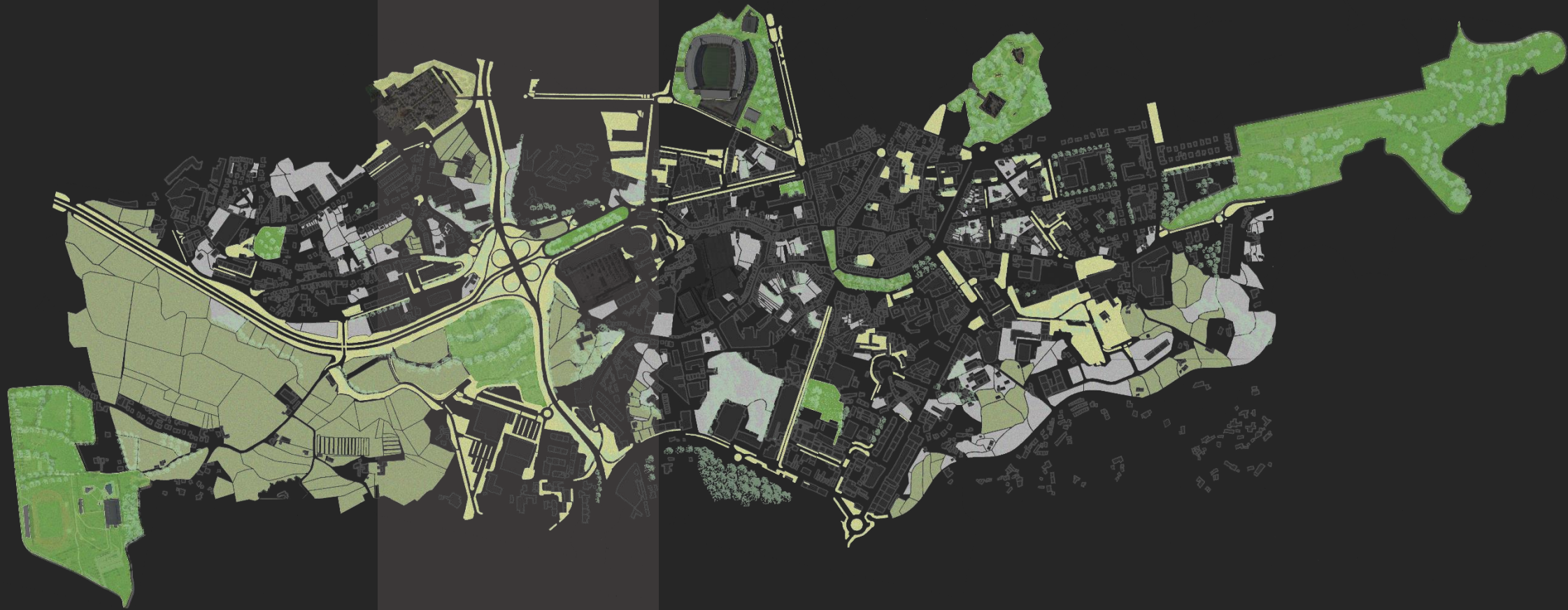
4 – Acção impositiva

Barreira Urbana. A intervenção da circular urbana no território



Auguste Roquemont, *Guimarães*. aguarela. 1930

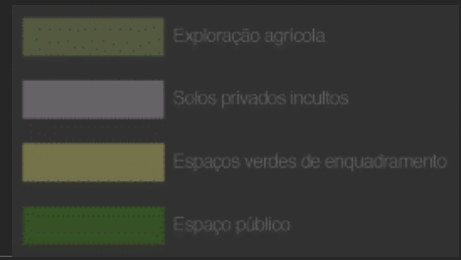
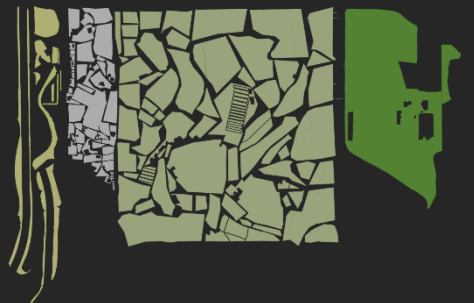
**Transversalidade.** Oportunidades de uma descentralização do núcleo urbano



Matriz rural

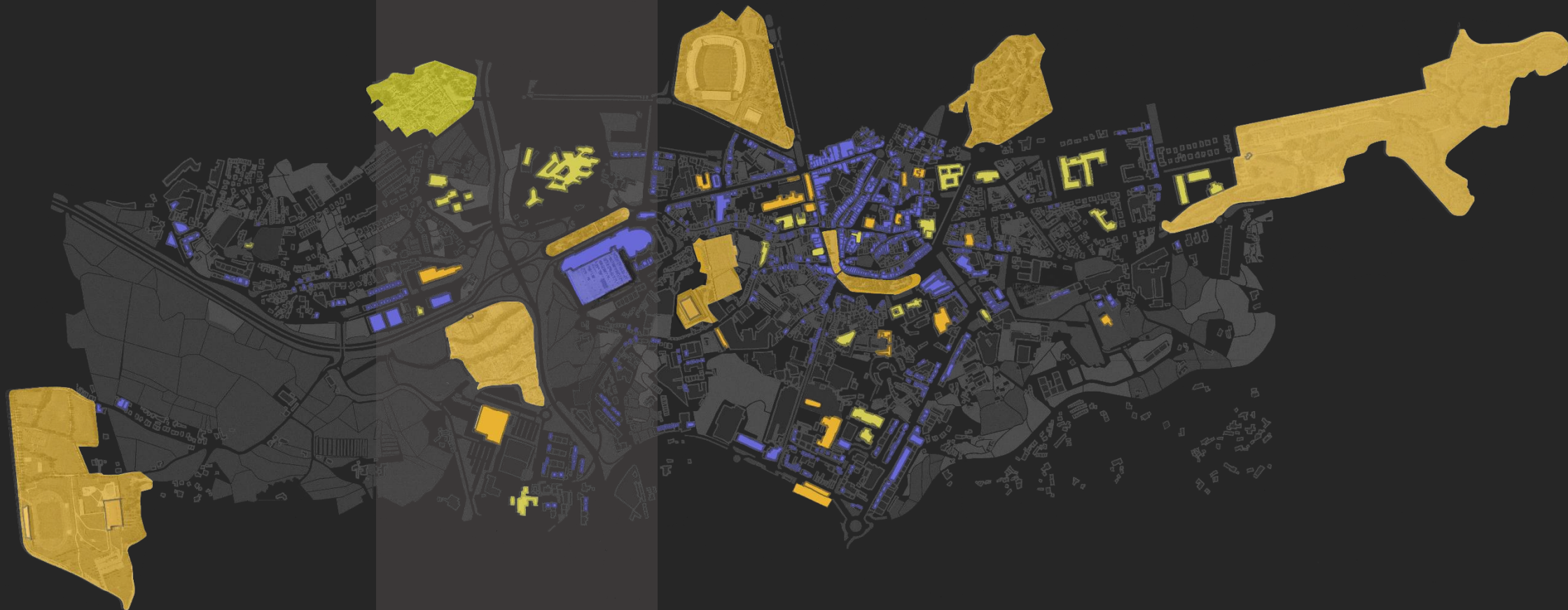
Núcleo urbano

Intersecção



**1 - Vazios.** Solo permeável e as suas ocupações

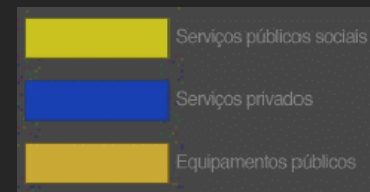
**Transversalidade.** Oportunidades de uma descentralização do núcleo urbano

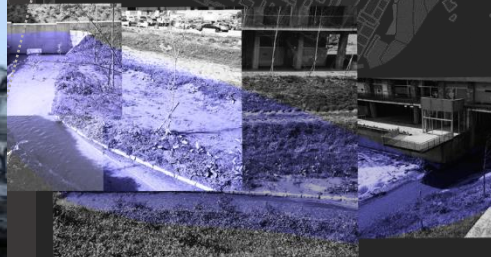
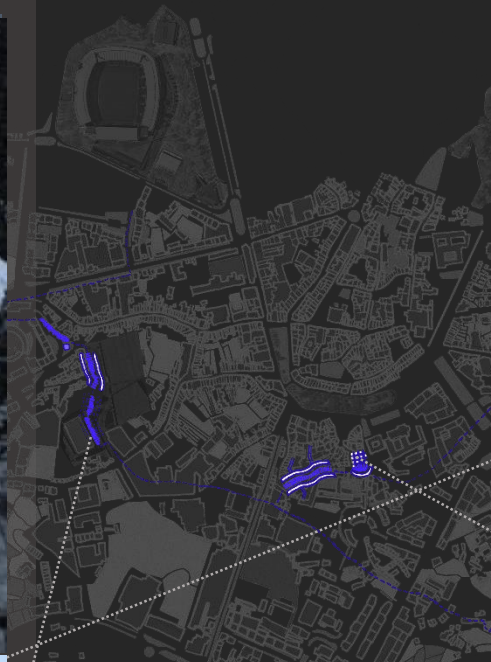


Matriz rural

Núcleo urbano

Intersecção





Mercado

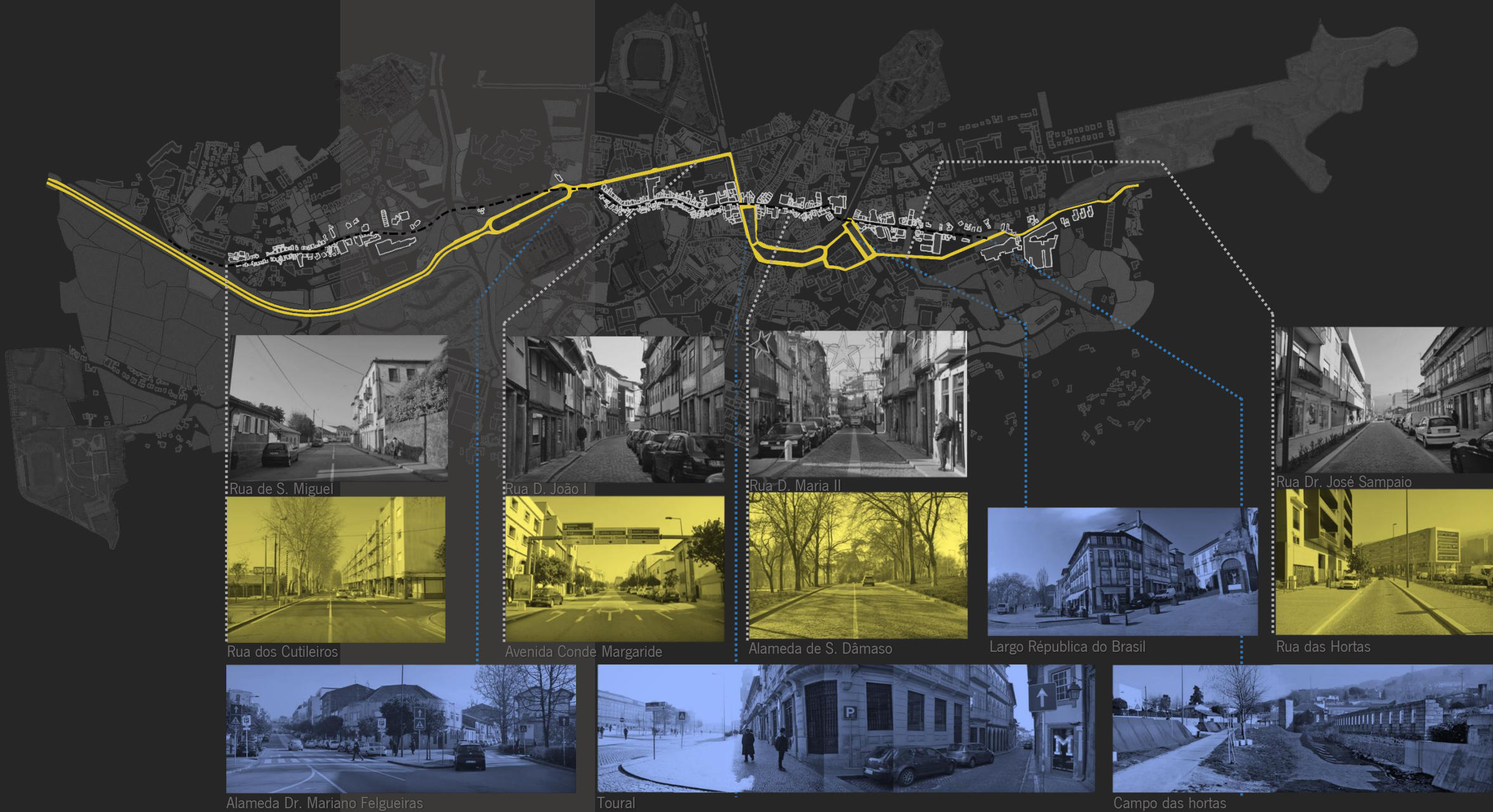


idade



**3 - Dependência.** Estratégias de qualificação e exploração da ribeira de Couros

**Transversalidade.** Oportunidades de uma descentralização do núcleo urbano



Rua de S. Miguel

Rua D. João I

Rua D. Maria II

Rua Dr. José Sampaio

Rua dos Cutileiros

Avenida Conde Margaride

Alameda de S. Dâmaso

Largo República do Brasil

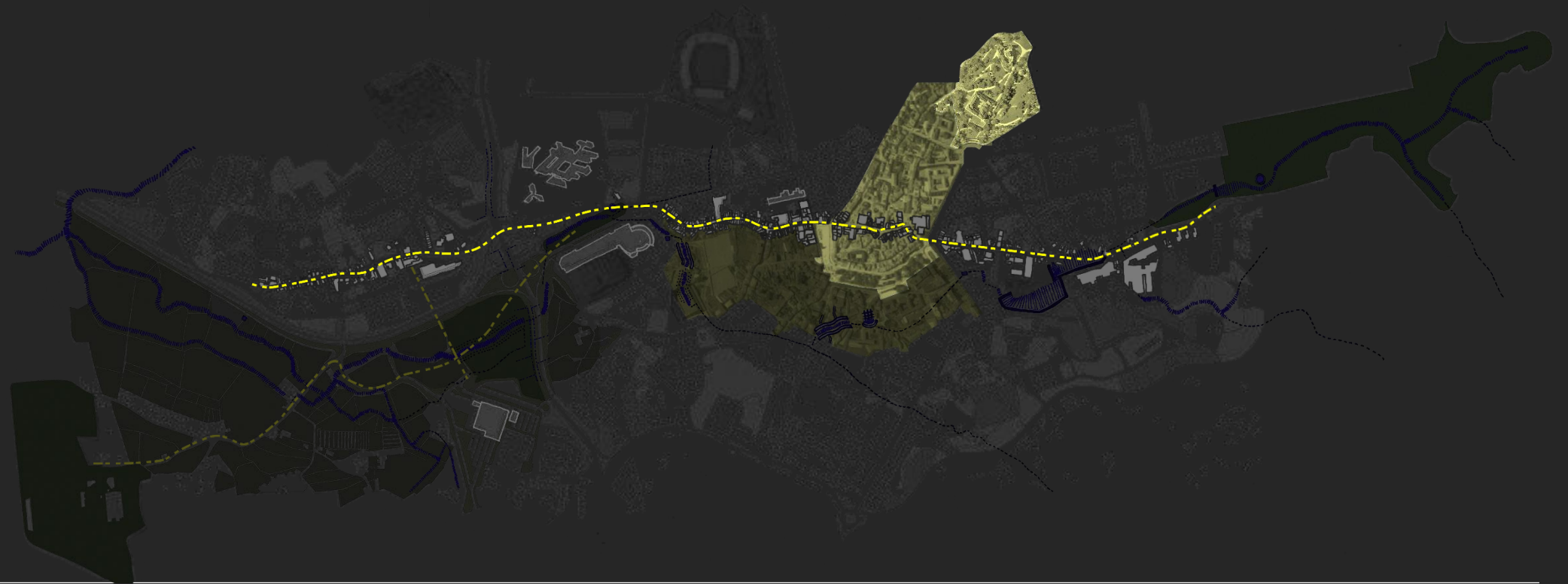
Rua das Hortas

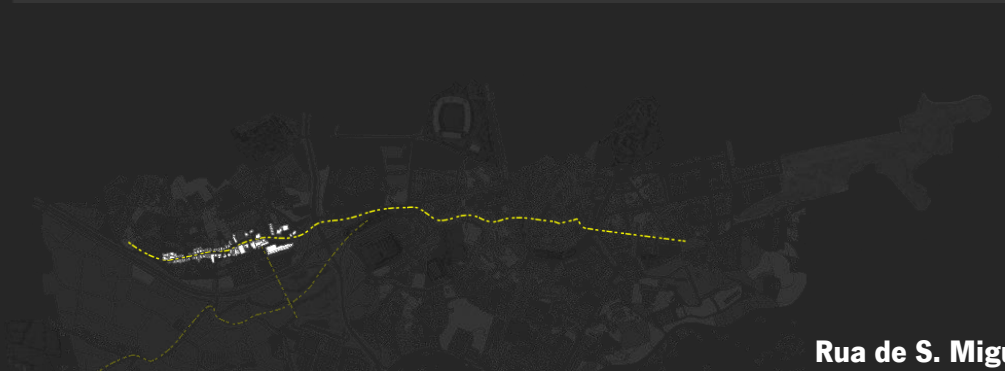
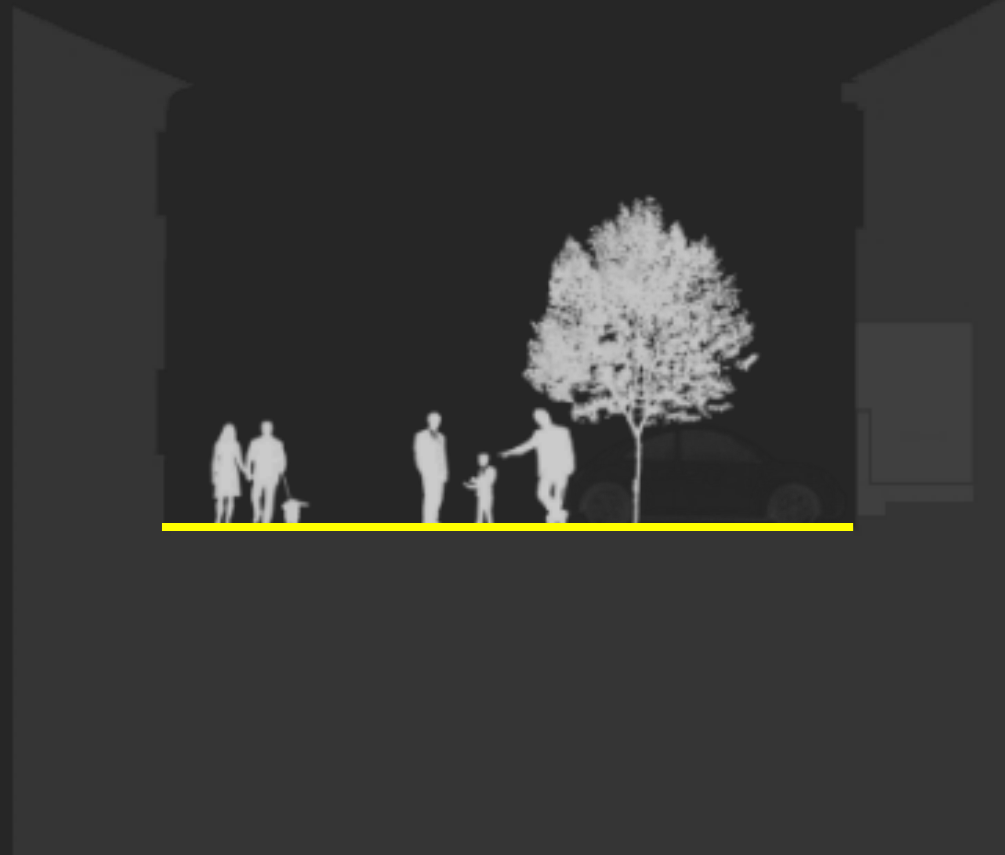
Alameda Dr. Mariano Felgueiras

Toural

Campo das hortas







Transversal urbana

Veiga de Creixomil  
Multiusos

Rua de S. Miguel

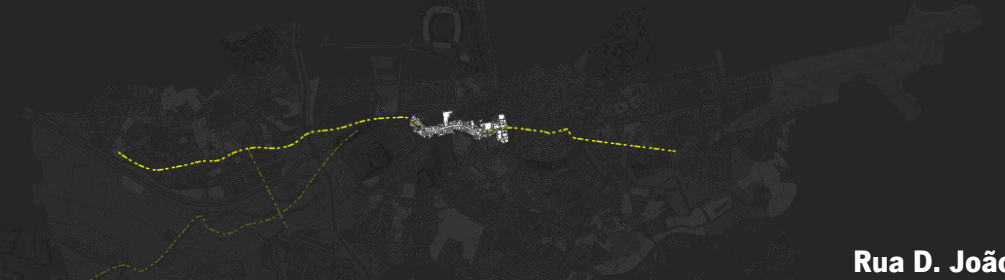
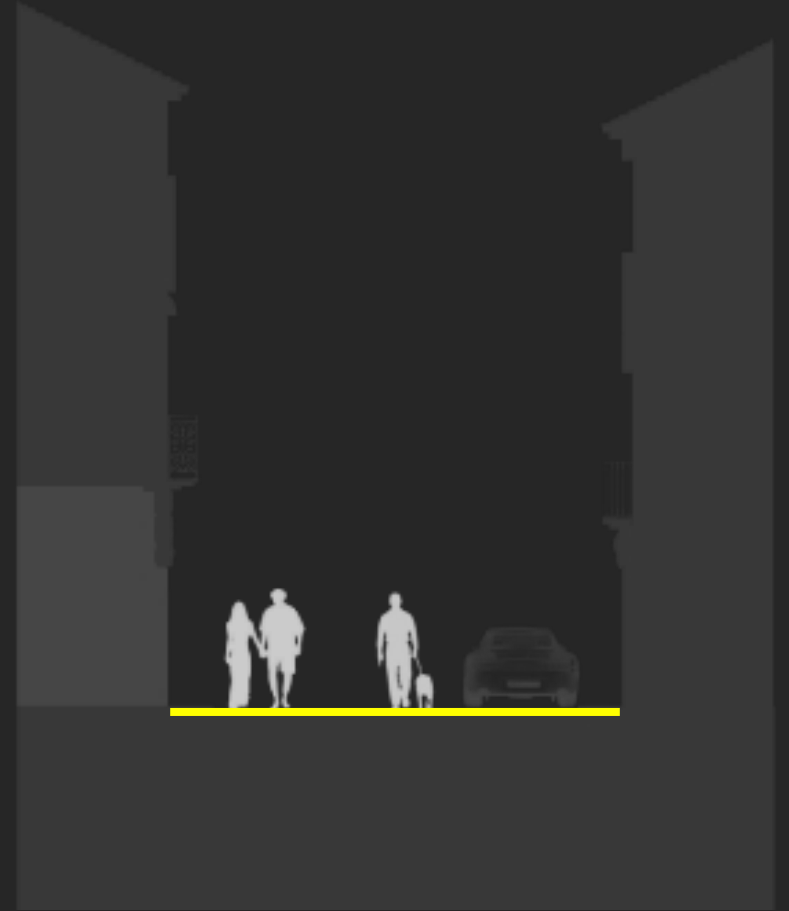
Estratégia. Uma via transversal inclusiva



Plataforma das Artes e da Criatividade

Mercado municipal  
Recinto da feira

Transversal urbana



Rua D. João I

Estratégia. Uma via transversal inclusiva

Gravura 1747



TELHADO GOVERNADOR PARTE DO RIL DE BALAÇO

Fotografia. 1918

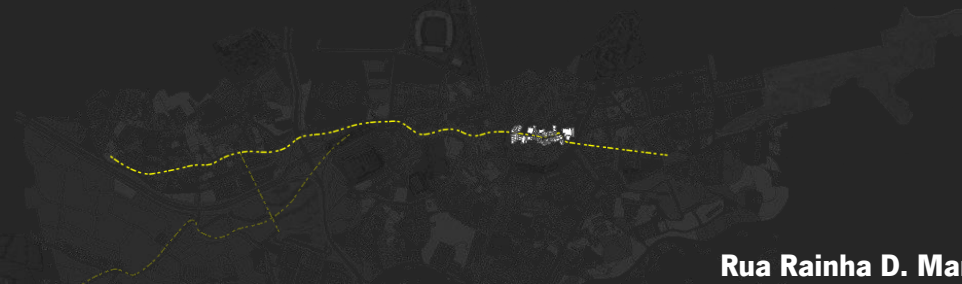
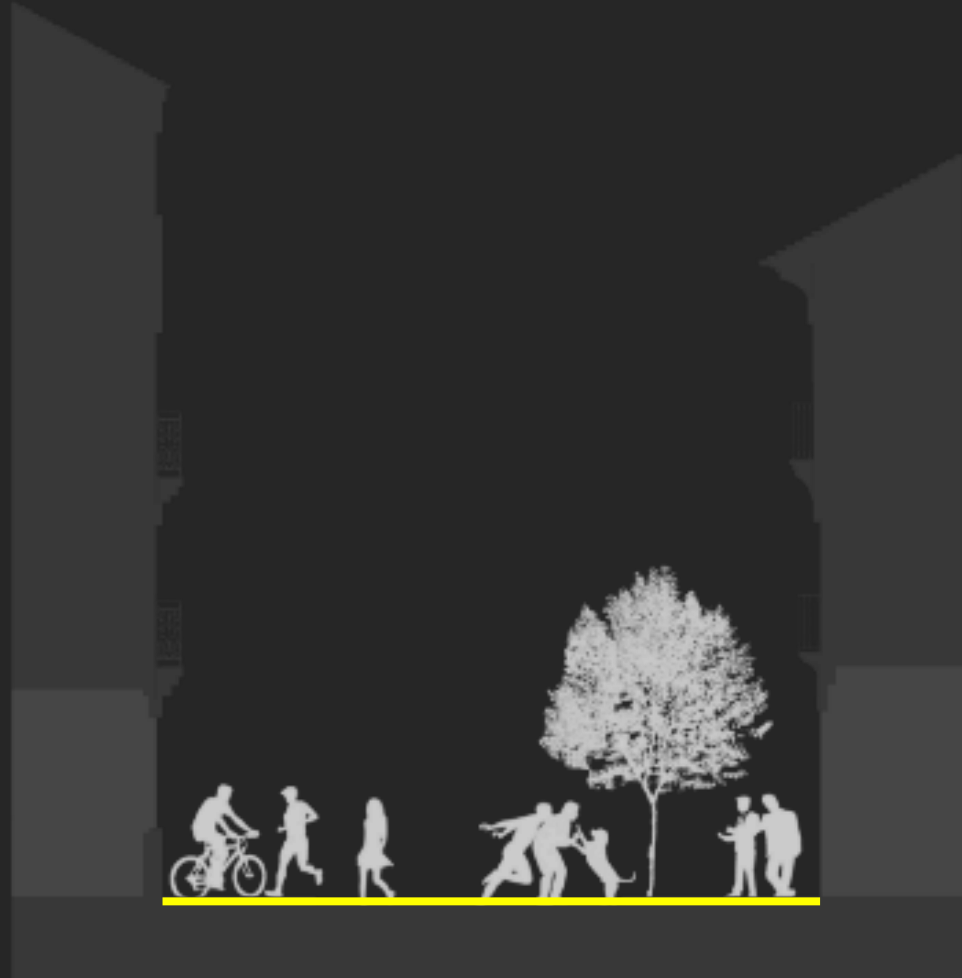


Centro histórico

Situação actual

Transversal urbana

Alameda de S. Dâmaso



Rua Rainha D. Maria II

Estratégia. Uma via transversal inclusiva

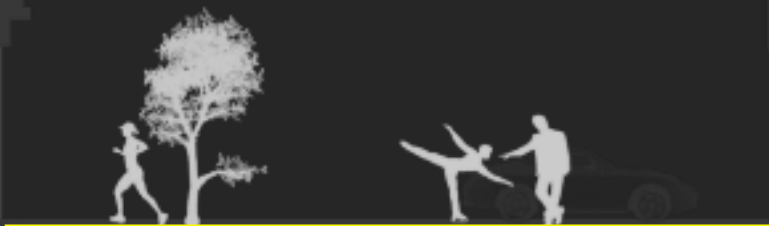
Fotografia 1922



Rua partilhada

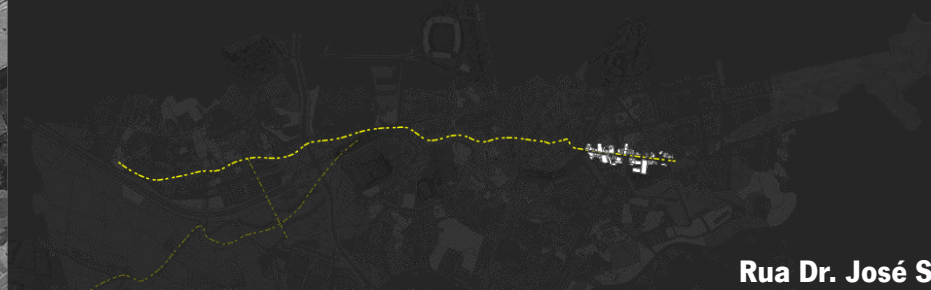


Parque da cidade



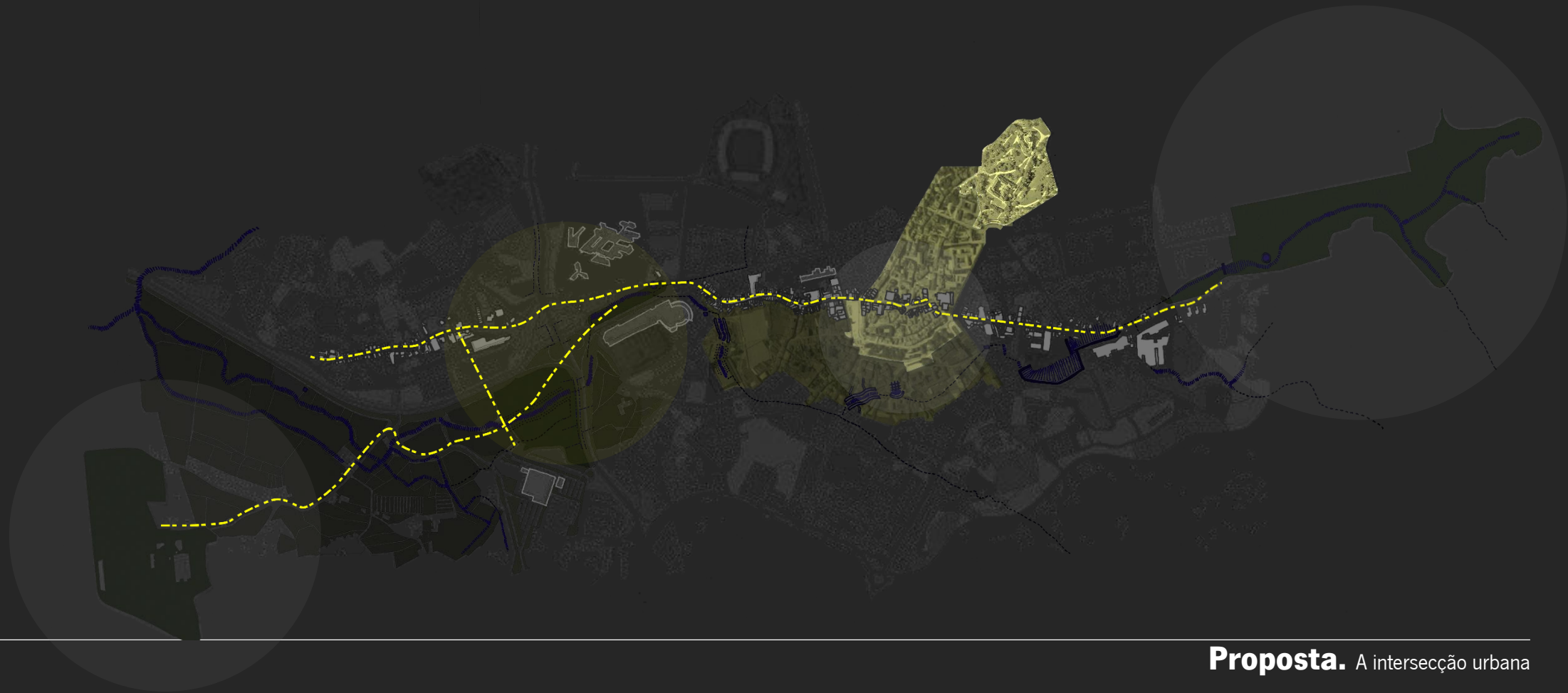
Situação actual

Transversal urbana

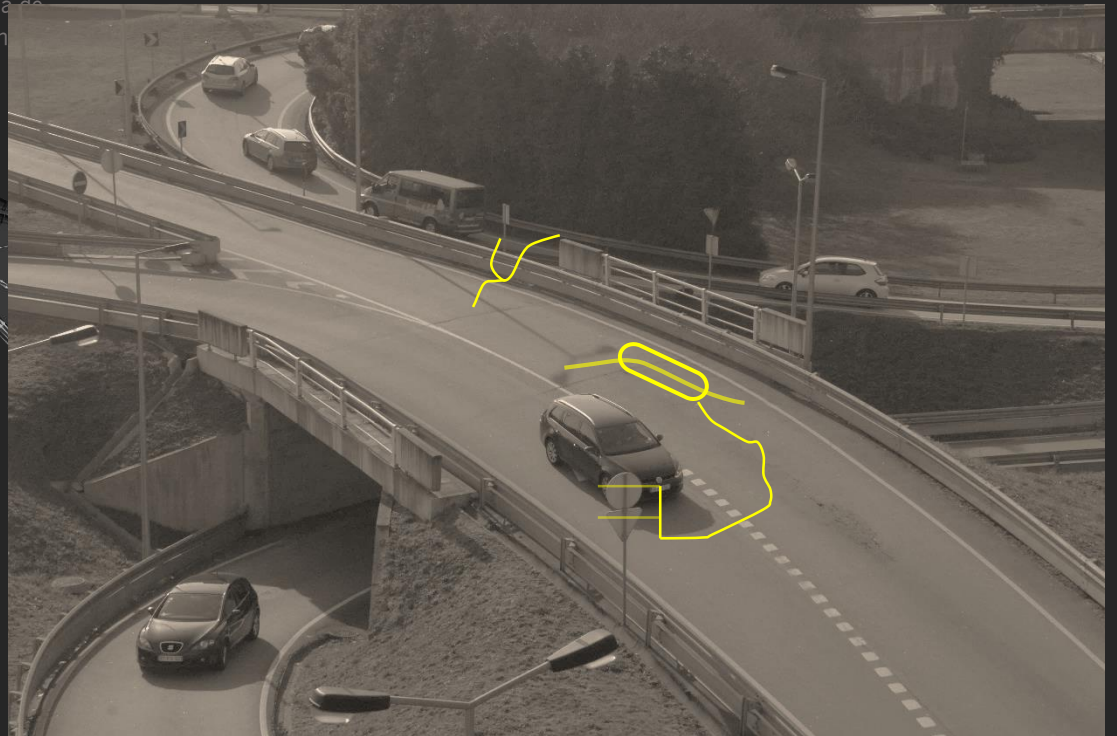
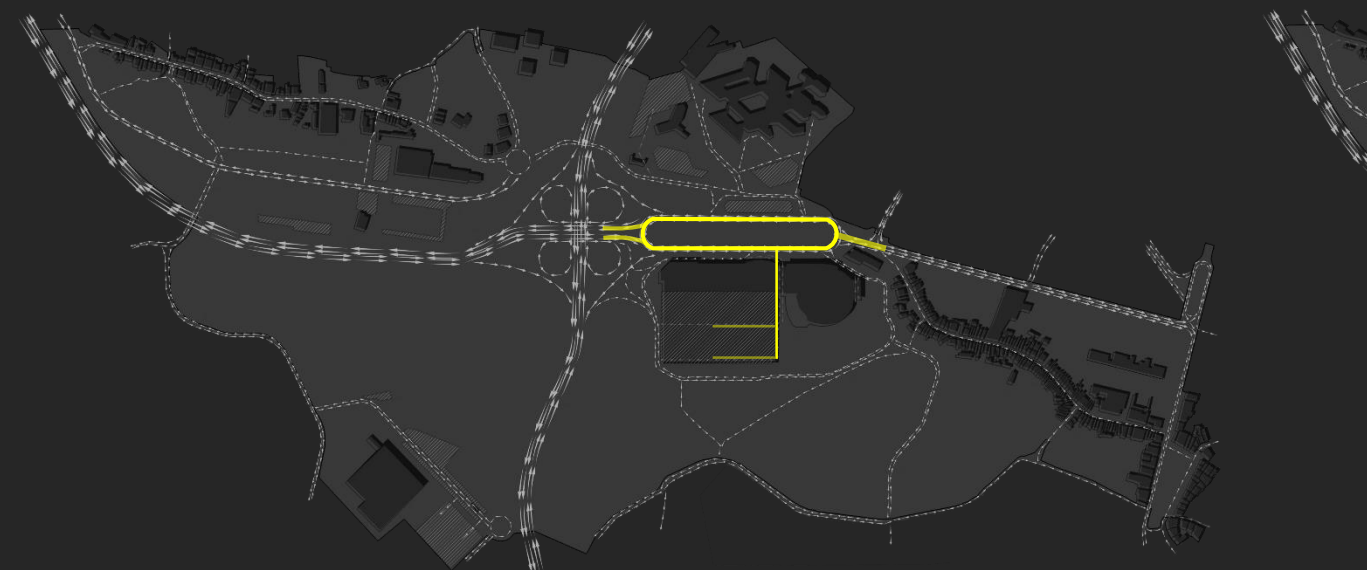


Rua Dr. José Sampaio

Estratégia. Uma via transversal inclusiva



**Proposta.** A intersecção urbana



Sistema viário

Situação actual

Proposta. A intersecção urbana

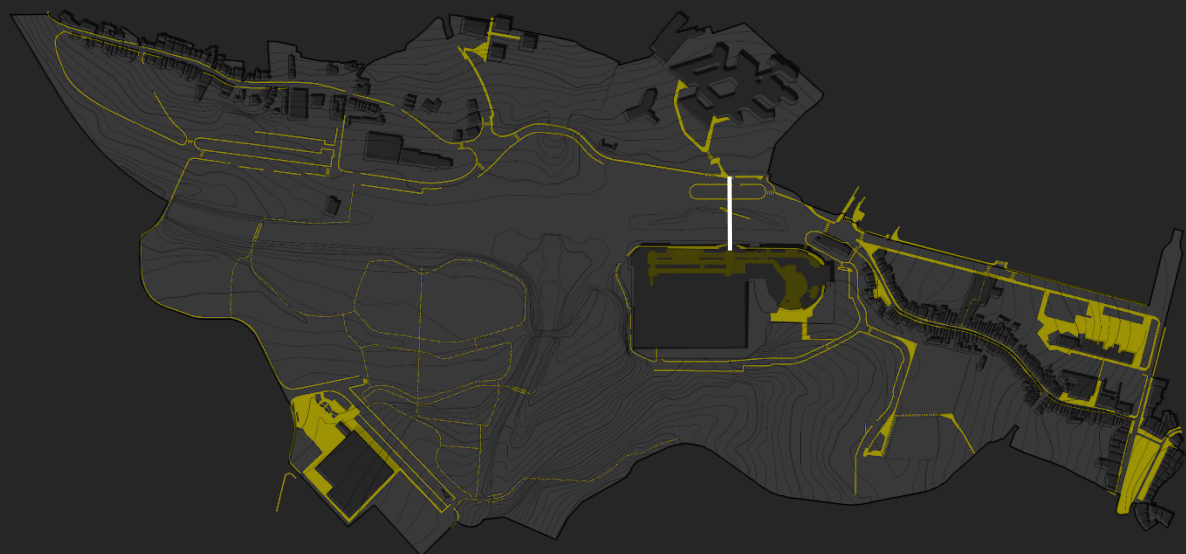


Sistema ecológico

Situação actual

Proposta. A intersecção urbana





Sistema de mobilidade suave

Situação actual

Proposta. A intersecção urbana



*“Cultures and climates differ all over the world, but people are the same. They’ll gather in public space if you give them a good place to do it.”*

Jan Gehl