

Evidence Review

The State of European Nursing Research: Dead, Alive, or Chronically Diseased? A Systematic Literature Review

David A. Richards, RN, BSc (Hons), PhD • Vania Coulthard, MSc • Gunilla Borglin, RN, MSc, PhD, on behalf of the REFLECTION review team

ABSTRACT

Keywords
complex
interventions,
nursing research,
Europe,
research methods

Background: Reviews of nursing research have suggested that most is descriptive; with no more than 15% providing strong evidence for practice. No studies have examined this from the perspective of nursing research conducted in Europe.

Objective: The aim of this study was to review reports of European clinical nursing research in the top 20 nursing journals in 2010 to establish a baseline of nursing research activity in the year immediately prior to the launch of a European Science Foundation network to increase the proportion of intervention research in Europe.

Methods: We identified eligible reports that were then data-extracted by two independent reviewers. Disagreements were resolved through pair discussion and independent arbitration. We appraised and synthesized topics, methods, and the extent to which studies were programmatic. We synthesized data as proportions of study reports meeting our a priori categorization criteria.

Results: We identified 1995 published reports and included 223 from 21 European countries, of which 193 (86.6%) reported studies of primary research only, 30 (13.5%) secondary research, and three (1.4%) a mix of primary and secondary. Methodological description was often poor, misleading, or even absent. One hundred (44.8%) articles reported observational studies, 87 (39.0%) qualitative studies. We found 26 (11.7%) articles reporting experimental studies, 10 (4.5%) of which were randomized controlled trials. We found 29 (13.0%) reports located within a larger program of research. Seventy-six (34.1%) articles reported studies of nursing interventions.

Linking Evidence to Action: European research in nursing reported in the leading nursing journals remains descriptive and poorly described. Only a third of research reports concerned nursing interventions, and a tiny proportion were part of a programmatic endeavor. Researchers in nursing must become better educated and skilled in developing, testing, evaluating, and reporting complex nursing interventions. Editors of nursing journals should insist on systematic reporting of research designs and methods in published articles.

INTRODUCTION

Determining the effects of nursing interventions has been identified as a research priority in the United Kingdom and North America (Hinshaw, 2000). Research is the primary mechanism to develop, test, and evaluate nursing interventions. Studies that review evidence or test interventions in comparative designs are the essential building blocks of evidence-based practice. Without these, nursing care remains rooted in traditional ways of working without secure evidence of effect or harm. With nursing care in some countries coming under intense scrutiny, criticism, and demand for change (Francis, 2013), it is now more pressing than ever that the care activities of practicing nurses should rest on a solid evidence base, guided by knowledge and ev-

idence gathered and analyzed through high-quality research studies.

However, senior evidence-based commentators (Chalmers & Glasziou, 2009) have suggested that 85% of research activity is “waste.” They accuse the research community of asking the wrong questions, using unnecessary or poor-quality research methods, failing to publish research promptly or not at all, and reporting research findings in a biased or unusable manner from studies that are often nonprogrammatic, uncoordinated, and unnecessarily repetitive. They maintain that much research confers no discernible benefit to people in need of health care, carers, and the professionals who deliver it. Although trials of nursing interventions have increased over the past decade (Melnyk, 2012) and reportedly have

improved in quality (Whittmore & Grey, 2002), in a similar critique, Hallberg has suggested that only 10–15% of nursing research carries “strong evidence for practice” (Hallberg, 2006, p. 924). Similarly, Mantzoukas (2009) found very few studies that tested, rather than observed, nursing interventions in 2,547 studies published in the 10 leading nursing research journals between years 2000 and 2006. Studies were mostly descriptive (47%) with few experimental (13%) or systematic reviews (5%), a finding echoed in a recent study of research reports from a random selection of 489 articles published in four nursing research journals from year 1985 to 2010 (Yarcheski, Mahone, & Yarcheski, 2012).

These studies may lead one to conclude that the accumulation of evidence from nursing research is slower than the challenges from health service and social care, developing technology, and the needs of patients—all evolving at rapid velocity. The required change of pace is not without its difficulties, however. We have argued elsewhere (Richards & Borglin, 2011) that nursing is a “complex intervention,” defined as an activity that contains a number of component parts with the potential for interactions between them which, when applied to the intended target population, produces a range of possible and variable outcomes (Medical Research Council, 2008). When nurses intervene with their patients, they do so within complex organizational structures using a range of psychological, social, and physical behaviors (Richards & Borglin, 2011; Seers, 2007). This creates significant difficulties for the design and conduct of intervention studies. Consequently, in 2011 we initiated a European research network—REFLECTION (<http://www.reflection-network.eu/>), funded by eight European research councils and academies under the auspices of the European Science Foundation. The network aims to develop an interdisciplinary European faculty of researchers in nursing, equipped to design, plan, and implement programmatic, mixed methods, and complex interventions research in nursing. One of our first activities was to lay down a benchmark on the state of European nursing research by conducting a systematic review covering the year before the network began. Here we report the results of this review—identifying, appraising, and synthesizing reports of clinical nursing research conducted in Europe and published in the top 20 impact factor rated scientific nursing journals in 2010.

METHODS

We followed a method based on established methods for systematic reviews (Centre for Reviews and Dissemination, 2008; Higgins & Green, 2011). We identified eligible papers, extracted and appraised data, and synthesized the results of data extraction.

REVIEW QUESTIONS

For European nursing research reported in the top 20 nursing journals in 2010, the questions were as follows.

1. What is the clinical focus in terms of population, care orientation and setting?
2. What is the frequency of different primary and secondary research methods?
3. What is the extent of translational, mixed/multi-methods, complex intervention focused and programmatic research?
4. What is the extent of research into the effects of nursing interventions?

SEARCH STRATEGY

We obtained electronic copies of all issues from the top 20 rated nursing journals using impact factors (Table 1) reported by Thompson Reuters Web of Knowledge Journal Citation Reports (<http://thomsonreuters.com/web-of-knowledge/>) for 2010.

Selection of Studies

We included clinical research articles that described the collection, analysis or reporting of primary or secondary data and which were conducted in one of the 47 European states as defined by the Council of Europe (<http://hub.coe.int/>). We detail the inclusion and exclusion criteria in Table 2.

PROCEDURE

Two reviewers at the coordinating center in Exeter, UK, identified potential studies for inclusion by reading the titles and abstracts of all articles. At this stage, we excluded only those articles that were clearly not research reports, investigated issues of nurse employment, burnout, or working conditions, or where the research had been conducted outside Europe, recording these reasons for exclusion. In cases of uncertainty or disagreement, we reached consensus by the involvement of a third reviewer. We retrieved all articles deemed potentially eligible and sent them to two independent reviewers in our European REFLECTION network for further eligibility checks and data extraction. Our review team consisted of 44 doctoral students or postdoctoral researchers, all members of the REFLECTION network, from 14 European countries who volunteered to join the project. All were able to read English to a scientific standard. We excluded further studies at this time according to the exclusion criteria, recording reasons.

DATA EXTRACTION

For each article, the two reviewers, blinded to their colleague, extracted data using a data extraction form developed for this purpose. We collated completed data extraction sheets at the Exeter center where we identified any disagreements between the two reviewers, unblinded them and returned them for reviewers to discuss and reach consensus. Where no consensus was reached, third (DAR) and fourth reviewers (GB) reviewed the extraction sheets to come to a final decision. Finally, the

Table 1. Overview of Included Journals

Journal	Impact	Journal	Impact
International Journal of Nursing Studies	2.103	Heart & Lung	1.508
Cancer Nursing	2.065	Journal of Nursing Administration	1.500
Birth: Issues in Perinatal Care	1.821	Journal of Nursing Management	1.452
Nursing Research	1.785	Journal of Cardiovascular Nursing	1.444
Oncology Nursing Forum	1.779	Worldviews on Evidence-Based Nursing	1.429
Research in Nursing & Health	1.736	International Journal of Mental Health Nursing	1.427
Journal of Family Nursing	1.689	Advances in Nursing Science	1.407
Nursing Outlook	1.653	Journal of Nursing Scholarship	1.392
American Journal of Critical Care	1.593	European Journal of Cardiovascular Nursing	1.348
Journal of Advanced Nursing	1.540	Journal of Obstetric Gynecologic & Neonatal Nursing	1.221

third reviewer (DAR) reviewed all data extraction sheets against the original articles and checked for consistency of data extraction between multiple reviewers. Where inconsistency was highlighted, the fourth reviewer (GB) reviewed the relevant papers and extraction sheets and discussed them with the third reviewer until agreement was reached.

We extracted data from each article on the following elements:

1. Inclusion and exclusion criteria (Table 2).
2. Originating country of the research.
3. Focus of the research:
 - a. Participant or patient population: infants/children/adolescents; adults; older adults; perinatal women; nonspecific population (e.g., pressure ulcers which could occur in any population);
 - b. Care orientation: primary/community care or public health; acute physical care; chronic physical illness; mental health; maternal and infant health; nonspecific orientation (e.g., care of pressure ulcers which could occur with any care orientation); other (e.g., healthy volunteers or recovered treatment survivors);
 - c. Setting: home; hospital including outpatients; residential community care; nonspecific setting (e.g., care of pressure ulcers which could occur in any care setting); other.
4. Type of research: primary or secondary.

5. Methods of primary research: experimental, observational or qualitative plus subcategories:

- a. Experimental: type 1 involving the measurement of dependent variables before and after the implementation of an intervention, manipulation of an independent variable, randomization and the presence of experimental and comparison groups; type 2 as type 1 but with no randomization; type 3 as type 1 but with no randomization or comparison group;
- b. Observational studies collecting numerical data where no attempt was made to manipulate independent variables, including: correlational retrospective studies linking observed phenomena in the present to past phenomena; correlational prospective linking observed phenomena in the present to future phenomena; cross-sectional studies studying the prevalence of phenomena or relationships between concurrent phenomena; case control studies comparing the differences between participants with certain illness conditions with a matched group of people without the condition; other studies including articles reporting questionnaire development or not fitting into previous observational categories;
- c. Qualitative studies divided into: ethnographic studies examining meanings, patterns and experiences of a defined cultural group in a holistic fashion; phenomenological research to determine the essence and meaning of a phenomenon experienced by people; grounded theory research to

Table 2. Criteria for Study Inclusion

Criteria	Included	Excluded
Participants	Studies where data are collected from nurses, the consumers, or potential consumers of nursing care; consumers including patients, members of the public, and carers of people in receipt of nursing care	All other
Time and Place	Studies published by authors reporting research conducted in any of Europe's 47 countries during year 2010	Non-European countries
	No restrictions on environments such as hospital, community, primary care, etc.	
Type of studies	All studies where <i>data</i> are collected from research involving clinical nursing practice	Editorials, commentaries, book reviews, study protocols, case reports, nonsystematic literature reviews, or other studies that have not collected, analyzed, or reported primary or secondary data
	All types of methodology	Studies evaluating methods for educating nurses
		Studies investigating issues of nurse employment, burnout, or working conditions
		Studies testing medical equipment
		Studies not investigating an aspect of nursing practice
Language	Studies published in one of the top 20 English language nursing journals listed in the Thompson Reuters Web of Knowledge Journal Citation Reports 2010	All other journals
		All other languages

generate a theory from data to explain a pattern of behavior relevant to informants; critical theory research aiming to critique existing social structures and involve collaboration with participants to lead to increased self-knowledge; feminist research with a similar background to critical theory but focused on the effects of gender and discrimination for women; other research not covered by the previous qualitative categories.

6. Methods of secondary research:

- a. systematic literature reviews where the study follows an explicit, systematic and replicable process of primary research study identification, appraisal and synthesis;
- b. meta-analyses where the study combines data from a number of primary research studies using a statistical method;
- c. meta-syntheses of primary qualitative data which bring together the findings from studies to pro-

duce second-order interpretations and develop theories;

- d. secondary, including retrospective, analysis of data gathered for a different study, which addresses new questions from an alternative perspective;
 - e. analysis of routine data that is collected for other purposes (e.g., mortality rates in hospitals) that was not intended to be collected for the study being reported.
7. Mixed methods research: whether the study used a combination of research methods. We classified studies encompassing the use of both qualitative and quantitative methods as mixed-methods research. Where one type of method alone was used we classified it as single method.
8. Whether the article reported a study as part of a program of research which aimed to build knowledge in an iterative process of development, testing, and evaluation of nursing interventions.

9. If the article was reporting research which could be classed as translational by turning appropriate theories or pilot interventions into nursing interventions to be used in a widespread way for the care of patients, people or carers.
 - a. Phase 1: studies that take prior theoretical or empirical knowledge and use it to construct a nursing intervention to transform nonclinical research results into clinical applications and test their safety and efficacy;
 - b. Phase 2: studies that take potential nursing interventions shown to be efficacious and safe from phase 1 translational research and test them in a clinical population to see how they function when they are applied to practice environments;
 - c. Phase 3: studies that take proven nursing interventions and investigate their uptake in routine nursing environments to convert treatments and prevention strategies, shown to be effective and/or cost-effective in Phase 2 translational research, into sustainable nursing solutions.
10. If the study was explicitly reported by the authors as fitting within one of the sequential stages in the MRC complex intervention framework as part of a program of nursing intervention development, testing evaluation, and implementation.
 - a. Development studies that review evidence, develop theory, and model potential interventions;
 - b. Pilot and feasibility studies that address necessary procedural, methodological and clinical uncertainties before full clinical testing;
 - c. Evaluation studies that test interventions for clinical and cost effectiveness;
 - d. Implementation studies that test the conversion of effective interventions into practice through dissemination, routine monitoring, and long-term surveillance.
11. If the article was reporting a study on a nursing intervention, defined as, “studies either questioning existing care practices or testing innovations in care that are shaped by nursing’s values and goals, guided by a strong theoretical basis, informed by recent advances in science, and designed to improve the quality of care and health of individuals, families, communities and society” (Naylor, 2003, p. 382).

DATA SYNTHESIS

We synthesized the extracted data by calculating the percentage of studies in each of the extraction categories, reporting raw

data and percentages. During data synthesis, we identified that almost 70% of qualitative studies did not fit into one of our a priori categories, being categorized as “other.” Therefore, we reanalyzed the qualitative methods studies using two new categories: (a) generic qualitative studies, and (b) qualitative studies guided by an explicit set of philosophical assumptions in the form of one of the known qualitative methodologies (Caelli, Ray, & Mill, 2003). We present both analyses.

RESULTS

We identified 1995 articles published in 2010 in the eligible journals. We excluded 1,729 articles from reading titles and abstracts. We assessed 266 full text articles and excluded a further 43, leaving 223 studies in the review for data extraction (Figure 1). For our complete list of included papers in this review please contact the authors.

Study Characteristics

Country of origin. We found articles reporting research from 21 out of a potential 47 European countries, two-thirds of which reported research conducted in one of four countries: the United Kingdom ($n = 64$, 28.7%), Sweden ($n = 36$, 16.1%), Norway ($n = 27$, 12.1%), or the Netherlands ($n = 21$, 9.4%). Belgium ($n = 14$, 6.3%), Turkey ($n = 11$, 4.9%), and Ireland ($n = 10$, 4.5%) were the next most numerous contributing countries. The remaining 13 countries contributed 7 (Finland: 3.1%), 6 (Denmark, Germany: 2.7%), 4 (Italy, Spain: 1.8%), 3 (Greece: 1.4%), 2 (France, Switzerland: .9%), and 1 (Austria, Cyprus, Iceland, Lithuania, Poland, Portugal: .5%) articles. We found 29 (13.0%) articles reporting research that included additional country collaborations. The most frequent of these were intra-European collaborations ($n = 29$, 13.1%), with the remainder being joint projects with the United States ($n = 10$, 4.5%) plus 1 each (.5%) for Japan and New Zealand.

Participant or patient population. We found 111 (49.8%) articles reporting studies including working age adults, 48 (21.5%) including older adults, 32 (14.4%) concerning perinatal women, 19 (8.5%) infants, children, or adolescents, and 48 (21.5%) reporting research for a nonspecific population. Thirty-five (15.7%) studies reported research on more than one population, most researching adults and older adults together.

Care orientation. We found 72 (32.3%) articles reporting studies in chronic physical illness, 36 (16.1%) in primary, community care, or public health, 36 (16.1%) in acute physical illness, 35 (15.7%) in mental health, 28 (12.6%) maternal and infant health, 3 (1.4%) for other care orientations, and 16 (7.2%) in nonspecific care orientations. Three (1.4%) studies had more than one care orientation.

Setting. We found 89 (39.9%) articles reporting studies in hospital settings including outpatients, 23 (10.3%) in home settings, 10 (4.5%) in residential community care, 4 (1.8%) in other settings, and 99 (44.4%) in nonspecific settings. Two (.9%) described studies in more than one setting.

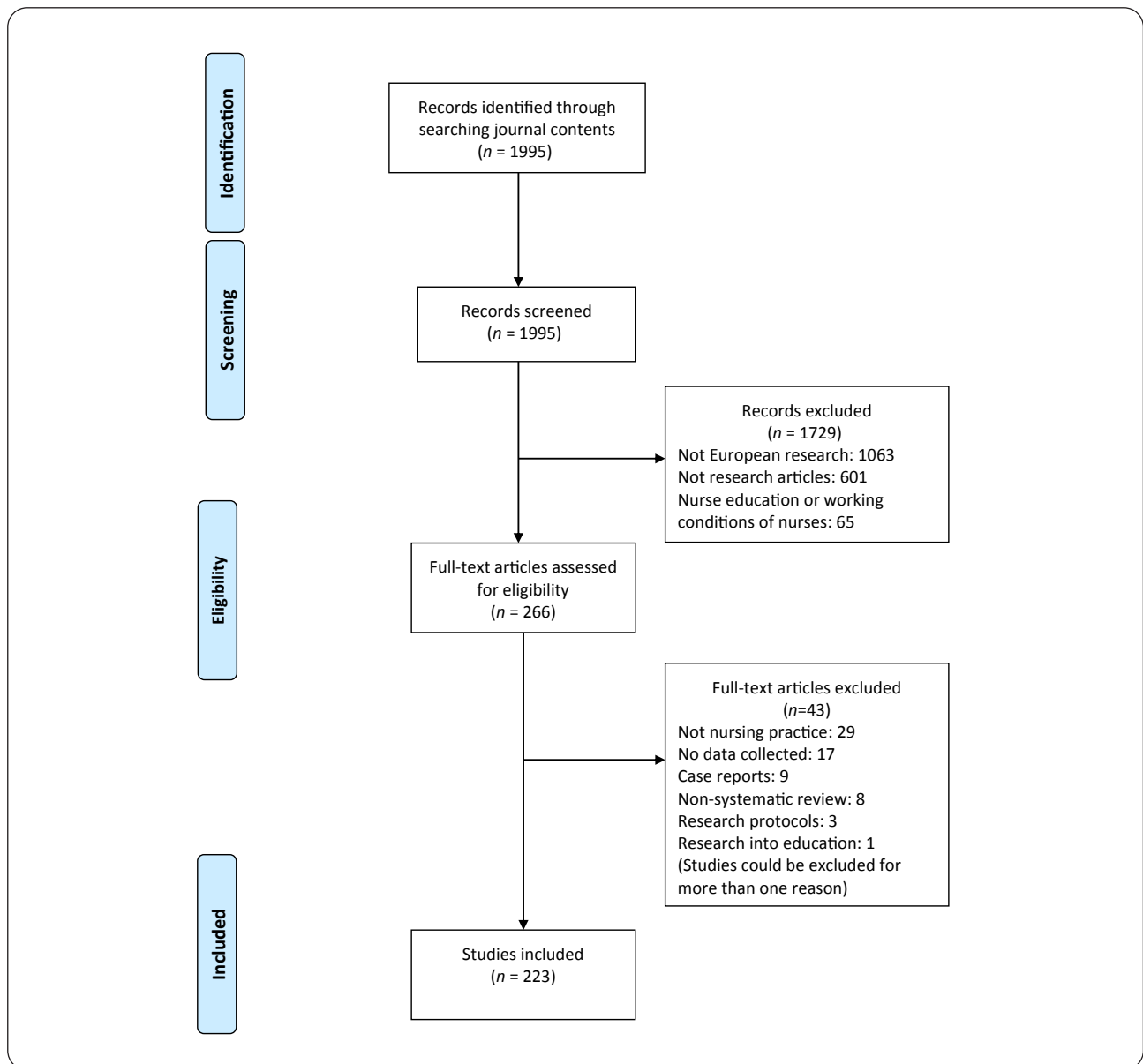


Figure 1. Review flow diagram.

Type of research. We found 193 (86.6%) articles reporting studies of primary research only, 30 (13.5%) reporting secondary research and 3 (1.4%) reporting a primary and secondary research mix. We categorized 26/223 (11.7%) articles as reporting experimental studies: 10 (4.5%) of which reported type 1, 4 (1.8%) type 2, and 12 (5.4%) type 3 experimental designs. We identified 100 (44.8%) articles reporting observational studies, of which 1 (.5%) was retrospective, 13 (5.8%) prospective, 62 (27.8%) cross-sectional, 1 (.5%) a case control study, and 23 (10.3%) other observational studies including 17 (7.6%) questionnaire development. We categorized 87 (39.0%) articles as reporting qualitative studies. We identified 5 (2.2%) studies as ethnographic, 10 (4.5%) as phenomenological, 14 (6.3%) as grounded theory, and 58 (26.0%) as “other”—67% of the total qualitative studies. No studies reported critical the-

ory or feminist research. When we recategorized the qualitative studies, 60 (26.9%) articles reported generic qualitative research designs and 27 (12.1%) reported qualitative studies guided by an explicit set of philosophical assumptions in the form of one of the known qualitative methodologies.

With regard to secondary research methods, we identified 21/221 (9.4%) systematic literature reviews, 10 (4.5%) of these including a meta-synthesis, 5 (2.2%) secondary analyses of data gathered for another study, and 9 (4.0%) routine data studies. Two studies (.9%) used a combination of data sources. There were no articles reporting meta-analyses.

We identified 11 (4.9%) articles, which reported mixed methods research and 29 (13.0%) reporting research located within a larger program of research. We categorized 10 (4.5%) studies as translational, 1 (.5%) phase 1, 8 (3.6%) phase 2, and 1

(.5%) phase 3. We identified 12 (5.4%) evaluation studies within the MRC complex interventions framework, and 2 (.9%) each for development, feasibility-piloting, and implementation. Finally, we classified 76 (34.1%) articles as reporting studies into nursing interventions.

DISCUSSION

Our review has demonstrated that the vast majority of clinical nursing research conducted in Europe and reported in the top 20 nursing journals in 2010 was descriptive. A mere third of published reports concerned nursing interventions. We found less than 5% of articles reporting randomized controlled trials into the effects of nursing interventions. Including nonrandomized studies, less than 12% of reports were classified as experimental. Our findings concur with reviews by Yarcheski, Mahone, and Yarcheski (2012) and Mantzoukas (2009), albeit our sample is more recent, drawn from a larger number of journals, and confined to European research. Although some authors have reported that researchers in nursing now conduct more intervention research than previously (Melnyk & Morrison-Beady, 2012; Whittmore & Grey, 2002), nonexperimental studies still dominate the published literature and few articles report research that is situated within a coordinated program of knowledge development and testing. Researchers seem more inclined to conduct cross-sectional snapshots of reality rather than experimental testing of interventions.

It is plausible that the low number of systematic reviews and meta-analyses we found is a result of the paucity of primary experimental research to synthesize. However, despite the high prevalence of qualitative reports (39%) this was also not reflected by a large number of meta-syntheses. With the significant numbers of qualitative study reports in nursing it is vital that findings from studies with small sample sizes and limited transferability to other contexts are synthesized to inform evidence-based nursing practice (Kent & Fineout-Overholt, 2008). We did not detect much of this important activity in our review.

We made various attempts to classify research as mixed, translational, programmatic, or organized using a progressive framework, but were unable to categorize many studies in this way. Although many authors included aspirational statements promising that research results would aid nursing care, very few reports situated research within a sequential, programmatic, and evidence-based process of reviewing, developing, evaluating, and implementing interventions. We found most of our included studies focused on understanding important phenomena, and yet were disconnected from direct efforts to improve care. Although phenomenological understanding is a critical part of the research process, often best conducted using qualitative methods, our findings support Melnyk (2012) and others who have highlighted that there are many areas where descriptive work exists en masse, but researchers have not moved on to testing and evaluating interventions in experimental designs. We would argue similarly, that combining qualitative and quantitative methods to develop, test, and un-

derstand how interventions work (or not) is where qualitative insights can significantly aid nursing care development. That we found only around one-third of reports that described the results of studies of nursing interventions means that, sadly, for many areas the lack of a programmatic mixed methods approach leaves only low-level evidence to guide nursing practice and nursing decision making.

The reporting of research methods left much to be desired. This was most obvious in our difficulties classifying qualitative designs, where many researchers used words such as “thematic analysis” rather than details of the explicit specific philosophical assumptions guiding their work. Generic qualitative designs dominated and it was worrying that some authors did not cite any methodological references. Other study designs were often just as difficult to classify. We found many examples of undefined terms like “exploratory comparative design” and one notable example entitled “longitudinal evaluation” which described an experimental uncontrolled before after study. Such inconsistency required us to review papers multiple times before our reviewers could reach agreement on classifying designs.

Strengths and Limitations

We chose the top 20 impact factor rated “nursing” journals because we might assume that a curious nurse wishing to inquire about her practice could reasonably be expected to look first in her professional research literature. We concede that this might mean we have under-represented the output of researchers in nursing who choose to publish their results in general health or medical journals. However, one might justifiably argue that the content of journals dedicated to nursing research should provide a barometer to the field. We were also constrained by the impact factor classification system itself. Some journals in our list had a clear biomedical leaning. However, we defend our choice as being entirely objective, unbiased, and uninfluenced by the review team’s beliefs and prejudices.

We had difficulty classifying interventions as “nursing” using Naylor’s (2003) definition. Consequently, we adopted a liberal interpretation and included all interventions that might contribute to the care of an individual, including activities not unique to nursing. For example, as a nursing intervention we included a systematic review of walking and blood pressure control conducted by a nursing research team, given that nurses could support patients in undertaking exercise as a means to reduce hypertension. There were many similar examples and we admit that some purists might accuse of us being too inclusive. We also found it difficult to apply the essentially biomedical concept of “translational research” to the cohort of nursing research studies and our data extractions on this topic should be treated cautiously.

Our review team was large and there were many examples where reviewers disagreed with each other. Reviewers came from very divergent European cultures, language groups, and research backgrounds, and their initial data extractions sometimes varied considerably. Consequently, we had to adopt a

strict moderation procedure to iron out inconsistencies in study data extraction and appraisal.

IMPLICATIONS FOR RESEARCH AND PRACTICE

Previously, we have suggested that the low prevalence of programmatic, experimental research designs is due to the fact that “research supervisors are the children of the old paradigm” (Richards & Borglin, 2011, p. 532). Others have likewise suggested that, “many professors themselves have not conducted interventions studies and are not comfortable in designing and implementing them” (Melnik, 2012, p. 63). The implications are that we must prepare the next generation of researchers in nursing to have a very different set of skills. PhD students should not be discouraged from conducting experimental work. Masters and doctoral education programs should be orientated toward these deficits, which is the explicit focus of our European Science Foundation REFLECTION network, with its aim to enable researchers to become better equipped in undertaking complex intervention research.

The influential Medical Research Council (2008) guidance on adapting research methods to complex interventions provides much needed advice on developing research programs across all healthcare areas, including nursing. Although nursing is a diverse subject area of research there is no reason to suppose that well-designed clinical intervention studies in nursing could not be competitive for research funding using this framework. The fact that only 12 studies referenced their place within the MRC framework (2008) is partly evidence that the framework has not had time to bed down in the nursing research community and make an impact on research published in 2010. Indeed, research reports published in 2010 are likely to reflect work planned and undertaken from 2000 to 2009. We will, therefore, repeat our review tri-annually to assess any development in this and our other review variables, including the proportion of intervention studies reported.

Editors of scientific nursing journals should be encouraged to use standard criteria for reporting all research designs, similar to CONSORT criteria for reporting randomized controlled trials (Schulz, Altman, & Moher, 2010). Standard descriptions of methods should be required for article titles. Structured abstracts with a PICO (participants, interventions, comparison, and outcome) (Boudin et al., 2010), a SPIDER (Sample, Phenomenon of Interest, Design, Evaluation, Research type) (Cooke, Smith, & Booth, 2012), or similar structure should be required, providing reviewers with clear indications for inclusion, and curious nurses help in selecting reading appropriate to their inquiries. Editors should also make it clear in their instructions to contributors that they wish to receive more reports of research into the effectiveness of nursing interventions.

CONCLUSIONS

European research in nursing reported in the leading nursing journals remains overwhelmingly descriptive and poorly described. Little more than a third of research reports concerned

nursing interventions and a tiny proportion were part of a programmatic endeavor to improve the evidence base for nursing care. For the inquiring nurse, curious about a problem in her practice life, research published in these journals is unlikely to provide robust evidence to guide her, even if she could find her way past the opaque titles and abstracts. The current and future generations of researchers in nursing must become educated, skilled, and comfortable in researching the complex interventions that comprise nursing care and should collaborate together to design coherent programs of mixed methods research which address the needs of nursing, society, and people, and counter the rising wave of criticisms of our professional practice. While we acknowledge that important knowledge can be derived from a range of research methods, the current relative proportions of study methods reported are less than helpful for the development of evidence-based nursing practice. **WVN**



LINKING EVIDENCE TO ACTION

- Researchers in nursing should design, undertake, and report fewer descriptive studies and more experimental research into the effectiveness of nursing interventions to ensure a more balanced proportion of intervention and descriptive research in nursing.
- To reduce the potential amount of “research waste,” researchers should first identify, appraise, and meta-synthesize the often large numbers of existing qualitative studies to ascertain if further primary qualitative studies are warranted.
- Researchers should structure their studies to explicitly link the development, testing, evaluation, and implementation of nursing interventions in coherent programs of research activity rather than as stand-alone projects.
- Nursing researchers should consider using the UK Medical Research Council’s “Complex Interventions Research Framework” to organize studies that will deliver an increased evidence base for nursing interventions.
- Editors of nursing journals should come to an urgent agreement that they require authors of submitted articles to report their findings using standardized formats for all types of research designs—for example, PRISMA and CONSORT, but in particular to use COREQ guidelines for qualitative designs.
- Doctoral education programs for nurses should encourage students to undertake experimental work into the efficacy and effectiveness of nursing interventions.

Author information

David A. Richards, Professor, University of Exeter Medical School, University of Exeter, United Kingdom; Vania Coulthard, University of Exeter Medical School, University of Exeter, United Kingdom; Gunilla Borglin, Associate Professor, Department of Health, Blekinge Institute of Technology, Karlskrona, Sweden and Faculty of Health and Society, Malmö University, SE-20506 Malmö, Sweden.

Funding: This research was supported through the authors' involvement in the European Science Foundation Research Network Programme 'REFLECTION' –09-RNP-049, Blekinge Institute of Technology, Karlskrona and the Faculty of Health and Society, Malmö, Sweden. The views expressed are those of the authors and not necessarily those of the European Science Foundation. DAR also receives support from the UK National Institute for Health Research South West Peninsula Collaborations for Leadership in Applied Health Research and Care.

The authors would like to acknowledge the contribution of Marte Lavender who managed the study databases and Neil Pumphrey who helped write the original protocol. In addition to the authors, REFLECTION review team members' names, who all undertook data extraction, are listed with the online version of this article.

Address correspondence to Dr. David A. Richards, University of Exeter Medical School, Highton Building, University of Exeter, St Luke's Campus, Heavitree Road, Exeter, EX1 2LU, United Kingdom; d.a.richards@exeter.ac.uk

Accepted 28 February 2014

Copyright © 2014, Sigma Theta Tau International

References

- Boudin, F., Nie, J. Y., Bartlett, J. C., Grad, R., Pluye, P., & Dawes, M. (2010). Combining classifiers for robust PICO element detection. *BMC Medical Informatics and Decision Making*, 10, 29. Retrieved from <http://link.springer.com/article/10.1186%2F1472-6947-10-29#page-1>
- Caelli K., Ray, L., & Mill, J. (2003). "Clear as mud": Toward greater clarity in generic qualitative research. *International Journal of Qualitative Methods*, 2(2). Retrieved from <http://www.ualberta.ca/~iiqm/backissues/pdf/caellietal.pdf>
- Centre for Reviews and Dissemination. (2008). *Systematic reviews: CRD's guidance for undertaking reviews in health care*. York, United Kingdom: University of York.
- Chalmers, I., & Glasziou, P. (2009). Avoidable waste in the production and reporting of research evidence. *The Lancet*, 374, 86–89.
- Cooke, A., Smith, D., & Booth, A. (2012). Beyond PICO: The SPIDER tool for qualitative evidence synthesis. *Qualitative Health Research*, 22(10), 1435–1443.
- Francis, R. (2013). *Report of the Mid Staffordshire NHS Foundation Trust Public Inquiry*. London, United Kingdom: The Stationary Office.
- Hallberg, I. (2006). Challenges for future nursing research: Providing evidence for health-care practice. *International Journal of Nursing Studies*, 43, 923–927.
- Higgins, J. P. T., & Green, S. (Eds.). (2011). *Cochrane handbook for systematic reviews of interventions*, (Version 5.1.0). Retrieved from www.cochrane-handbook.org.
- Hinshaw, A. S. (2000). Nursing knowledge for the 21st century: Opportunities and challenges. *Journal of Nursing Scholarship*, 32(2), 117–123.
- Kent, B., & Fineout-Overholt, E. (2008). Using meta-synthesis to facilitate evidence-based practice. *Worldviews on Evidence-Based Nursing*, 5(3), 160–162.
- Mantzoukas, S. (2009). The research evidence published in high impact journals between 2000–2006: A quantitative content analysis. *International Journal of Nursing Studies*, 46, 479–489.
- Medical Research Council. (2008). *Developing and evaluating complex interventions: New guidance*. London, United Kingdom: Author.
- Melnik, B. M. (2012). The role of technology in enhancing evidence-based practice, education, healthcare quality, and patient outcomes: A call for randomized controlled trials and comparative effectiveness research. *Worldviews on Evidence-Based Nursing*, 9(2), 63–65.
- Melnik, B. M., & Morrison-Beedy, D. (2012). *Designing, conducting, analysing and funding intervention research. A practice guide for success*. New York, NY: Springer Publishing.
- Naylor, M. D. (2003). Nursing intervention and quality of care: Influencing the future of health care. *Nursing Research*, 52(6), 380–385.
- Richards, D. A., & Borglin, G. (2011). Complex interventions and nursing: Looking through a new lens at nursing research. *International Journal of Nursing Studies*, 48, 531–533.
- Schulz, K. F., Altman, D. G., & Moher, D. (2010). CONSORT 2010 Statement: Updated guidelines for reporting parallel group randomised trials. *British Medical Journal*, 2010, 340–332.
- Seers, K. (2007). Evaluating complex interventions. *Worldviews on Evidence-Based Nursing*, 4(2), 67–68.
- Whittmore, R., & Grey, M. (2002). The systematic development of nursing interventions. *Journal of Nursing Scholarship*, 34(29), 115–120.
- Yarcheski, A., Mahone, N. E., & Yarcheski, T. J. (2012). A descriptive study of research published in scientific nursing journals from 1985 to 2010. *International Journal of Nursing Studies*, 49, 1112–1121.

doi 10.1111/wvn.12039

WVN 2014;11:147–155

SUPPORTING INFORMATION

Additional supporting information may be found in the online version of this article at the publisher's web site:

Appendix Sr: Collaborator acknowledgements